

For Research Use Only

CoraLite® Plus 647 Anti-Human Ig Lambda Light Chain Rabbit Recombinant Antibody

Catalog Number: CL647-98723-2



Basic Information

Catalog Number:

CL647-98723-2

Size:

100 tests, 5 ul/test

Source:

Rabbit

Isotype:

IgG

Immunogen Catalog Number:

EG6676

GenBank Accession Number:

GeneID (NCBI):

3500

Full Name:

immunoglobulin heavy constant gamma 1 (G1m marker)

Purification Method:

Protein A purification

CloneNo.:

251497D8

Recommended Dilutions:

FC: 5 ul per 10⁶ cells in a 100 µl suspension

Excitation/Emission maximum wavelengths:

654 nm / 674 nm

Applications

Tested Applications:

FC

Species Specificity:

human

Positive Controls:

FC : human PBMCs,

Background Information

Human Ig lambda (λ) light chain is one of the two types of light chains (the other being kappa, κ) that constitute the basic building blocks of human antibodies (immunoglobulins). Each antibody molecule contains two identical light chains paired with two identical heavy chains, forming the characteristic Y-shaped structure. It is an essential component of the humoral immune system, providing structural diversity for antigen recognition while serving as a critical diagnostic marker for plasma cell dyscrasias.

Storage

Storage:

Store at 2-8°C. Avoid exposure to light. Stable for one year after shipment.

Storage Buffer:

PBS with 0.09% sodium azide and 0.5% BSA, pH7.3

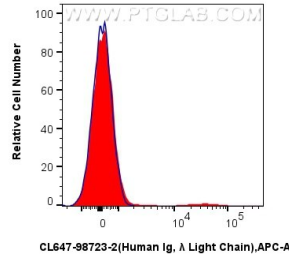
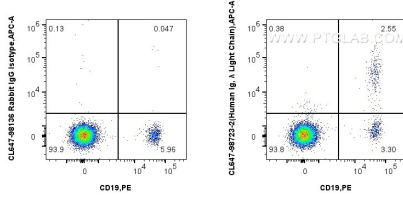
For technical support and original validation data for this product please contact:

T: 1 (888) 4PTGLAB (1-888-478-4522) (toll free in USA), or 1(312) 455-8498 (outside USA)

E: proteintech@ptglab.com
W: ptglab.com

This product is exclusively available under Proteintech Group brand and is not available to purchase from any other manufacturer.

Selected Validation Data



1x10⁶ human PBMCs were surface stained with PE Anti-Human CD19, and 5 ul CoraLite® Plus 647 Anti-Human Ig Lambda Light Chain Rabbit RecAb (CL647-98723-2, Clone: 251497D8) or CoraLite® Plus 647 Rabbit IgG Isotype Control Recombinant Antibody (CL647-98136, Clone: 240953C9). The cells originate from CD11b-negative cells. Cells were incubated with FC Receptor Block prior to staining. Cells were not fixed.

1x10⁶ human PBMCs were surface stained with 5 ul CoraLite® Plus 647 Anti-Human Ig Lambda Light Chain Rabbit RecAb (CL647-98723-2, Clone: 251497D8) (red) or CoraLite® Plus 647 Rabbit IgG Isotype Control Recombinant Antibody (CL647-98136, Clone: 240953C9) (blue). The cells originate from CD11b-negative cells. Cells were incubated with FC Receptor Block prior to staining. Cells were not fixed.