

For Research Use Only

# CoraLite® Plus 647 Anti-Mouse NK1.1 (CD161) Rabbit Recombinant Antibody

Catalog Number:CL647-98820



## Basic Information

Catalog Number:

CL647-98820

Size:

100ug , 500 ug/ml

Source:

Rabbit

Isotype:

IgG

Immunogen Catalog Number:

EG6938

GenBank Accession Number:

NM\_001159904

GeneID (NCBI):

17059

UNIPROT ID:

P27814

Full Name:

killer cell lectin-like receptor subfamily B member 1C

Calculated MW:

25KD

Purification Method:

Protein A purification

CloneNo.:

253074D6

Recommended Dilutions:

FC: 0.25 ug per 10<sup>6</sup> cells in a 100 µl suspension

Excitation/Emission maxima wavelengths:

654 nm / 674 nm

## Applications

Tested Applications:

FC

Species Specificity:

mouse

Positive Controls:

FC : mouse splenocytes,

## Background Information

NK1.1 (CD161), also known as KLRB1 or NKR-P1A, is a type II transmembrane C-type lectin-like receptor and is expressed on the cell membrane as disulfide-linked homodimer (PMID: 8077657). It is expressed by the majority of NK cells and subsets of peripheral T cells, including both CD4+ and CD8+ T cells, and is expressed preferentially on adult T cells with a "memory" antigenic phenotype (PMID: 8077657; 22566826). Expression of CD161 correlates with the cytotoxic function of CD16+ NK cells, and ligation of CD161 with its ligand LLT1 inhibits NK cell cytotoxicity and cytokine secretion (PMID: 29686665).

## Storage

Storage:

Store at 2-8°C. Avoid exposure to light. Stable for one year after shipment.

Storage Buffer:

PBS with 0.09% sodium azide, pH7.3

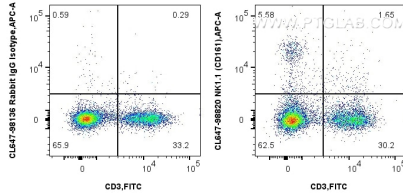
For technical support and original validation data for this product please contact:

T: 1 (888) 4PTGLAB (1-888-478-4522) (toll free in USA), or 1(312) 455-8498 (outside USA)

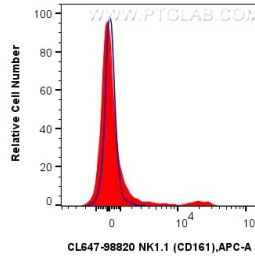
E: [proteintech@ptglab.com](mailto:proteintech@ptglab.com)  
W: [ptglab.com](http://ptglab.com)

This product is exclusively available under Proteintech Group brand and is not available to purchase from any other manufacturer.

## Selected Validation Data



1x10<sup>6</sup> mouse splenocytes were surface stained with FITC Plus Anti-Mouse CD3, and 0.25 ug CoraLite® Plus 647 Anti-Mouse NK1.1 (CD161) Rabbit RecAb (CL647-98820, Clone: 253074D6) or CoraLite® Plus 647 Rabbit IgG Isotype Control Recombinant Antibody (CL647-98136, Clone: 240953C9). Cells were not fixed.



1x10<sup>6</sup> mouse splenocytes were surface stained with 0.25 ug CoraLite® Plus 647 Anti-Mouse NK1.1 (CD161) Rabbit RecAb (CL647-98820, Clone: 253074D6) (red) or CoraLite® Plus 647 Rabbit IgG Isotype Control Recombinant Antibody (CL647-98136, Clone: 240953C9) (blue). Cells were not fixed.