

For Research Use Only

# CoraLite®650-conjugated Calnexin Polyclonal antibody



Catalog Number:CL650-10427

## Basic Information

<b>Catalog Number:</b> CL650-10427	<b>GenBank Accession Number:</b> BC003552	<b>Purification Method:</b> Antigen affinity purification
<b>Size:</b> 100ul , Concentration: 1000 µg/ml by Nanodrop;	<b>GeneID (NCBI):</b> 821	<b>Excitation/Emission maxima wavelengths:</b> 654 nm/674 nm
<b>Source:</b> Rabbit	<b>Full Name:</b> calnexin	
<b>Isotype:</b> IgG	<b>Calculated MW:</b> 90 kDa	
<b>Immunogen Catalog Number:</b> AG0697	<b>Observed MW:</b> 90 kDa	

## Applications

**Tested Applications:**  
FC (Intra)

**Species Specificity:**  
human, mouse, rat

## Background Information

Calnexin is a molecular chaperone that resides in the endoplasmic reticulum (ER) and participates in the folding and assembly of newly synthesized proteins. Calnexin is highly abundant in ER and is frequently used as an ER marker.

## Storage

**Storage:**  
Store at -20°C. Avoid exposure to light.

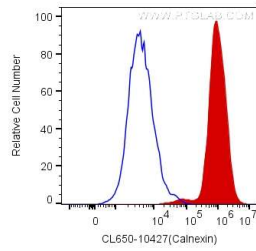
**Storage Buffer:**  
PBS with 50% Glycerol, 0.05% Proclin300, 0.5% BSA, pH 7.3.

**Aliquoting is unnecessary for -20°C storage**

For technical support and original validation data for this product please contact:  
T: 1 (888) 4PTGLAB (1-888-478-4522) (toll free in USA), or 1(312) 455-8498 (outside USA)      E: [proteintech@ptglab.com](mailto:proteintech@ptglab.com)  
W: [ptglab.com](http://ptglab.com)

**This product is exclusively available under Proteintech Group brand and is not available to purchase from any other manufacturer.**

## Selected Validation Data



1X10<sup>6</sup> HeLa cells were intracellularly stained with 0.2 ug CoraLite®650 Anti-Human Calnexin (CL650-10427) (red), or 0.2 ug Control Antibody (blue). Cells were fixed with 4% PFA and permeabilized with Flow Cytometry Perm Buffer (PF00011-C).