

For Research Use Only

CoraLite®700 Anti-Human CD64 (10.1) Mouse IgG2a Recombinant Antibody

Catalog Number:CL700-65572



Basic Information

Catalog Number:

CL700-65572

Size:

100tests , 5 ul/test

Source:

Mouse

Isotype:

IgG2a

GenBank Accession Number:

BC032634

GeneID (NCBI):

2209

ENSEMBL Gene ID:

ENSG00000150337

Full Name:

Fc fragment of IgG, high affinity Ia, receptor (CD64)

Calculated MW:

374 aa, 43 kDa

Purification Method:

Protein A purification

CloneNo.:

10.1

Recommended Dilutions:

FC: 5 ul per 10⁶ cells in a 100 µl suspension

Excitation/Emission maxima wavelengths:

702 nm / 723 nm

Applications

Tested Applications:

FC

Species Specificity:

human

Positive Controls:

FC : human PBMCs,

Background Information

Fcγ receptor comprise a multigene family of integral membrane glycoproteins that exhibit complex activation or inhibitory effects on cell functions after aggregation by complexed immunoglobulin G (IgG) (PMID: 17005690). CD64, also known as Fcγ R1A, is a high-affinity receptor for the Fc region of IgG. It is expressed by monocytes/macrophages, activated neutrophils, dendritic cells, and early myeloid cells (PMID: 23293080; 19642859; 7680917). CD64 functions in both innate and adaptive immune responses.

Storage

Storage:

Store at 2-8°C. Avoid exposure to light. Stable for one year after shipment.

Storage Buffer:

PBS with 0.09% sodium azide and 0.5% BSA, pH7.3

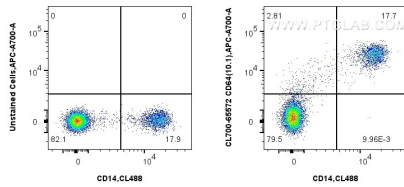
For technical support and original validation data for this product please contact:

T: 1 (888) 4PTGLAB (1-888-478-4522) (toll free in USA), or 1(312) 455-8498 (outside USA)

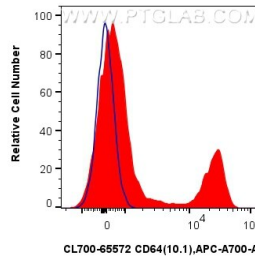
E: proteintech@ptglab.com
W: ptglab.com

This product is exclusively available under Proteintech Group brand and is not available to purchase from any other manufacturer.

Selected Validation Data



1x10⁶ human PBMCs were surface stained with CoraLite® Plus 488 Anti-Human CD14, and 5 ul CoraLite®700 Anti-Human CD64 (10.1) Mouse IgG2a RecAb (CL700-65572, Clone:10.1) or unstained. Cells were incubated with FC Receptor Block prior to staining. Cells were not fixed.



1x10⁶ human PBMCs were surface stained with 5 ul CoraLite®700 Anti-Human CD64 (10.1) Mouse IgG2a RecAb (CL700-65572, Clone:10.1) (red) or unstained (blue). Cells were incubated with FC Receptor Block prior to staining. Cells were not fixed.