

For Research Use Only

CoraLite®700 Anti-Human CD90 Rabbit Recombinant Antibody

Catalog Number:CL700-98126



Basic Information

Catalog Number:

CL700-98126

Size:

100tests , 5 ul/test

Source:

Rabbit

Isotype:

IgG

GenBank Accession Number:

BC065559

GeneID (NCBI):

7070

UNIPROT ID:

P04216

Full Name:

Thy-1 cell surface antigen

Calculated MW:

161 aa, 18 kDa

Purification Method:

Protein A purification

CloneNo.:

241290B2

Recommended Dilutions:

FC: 5 ul per 10⁶ cells in a 100 µl suspension

Excitation/Emission maxima wavelengths:

702 nm / 723 nm

Applications

Tested Applications:

FC

Species Specificity:

human

Positive Controls:

FC : HEL92.1.7 cells,

Background Information

CD90, also known as THY1, is a 25-35 kD protein that is expressed on 1-4% of human fetal liver cells, cord blood cells, and bone marrow cells. CD90 is one of the essential surface molecules expressed on human MSC from bone marrow and other sources. Activation of Thy-1 has been reported to promote T cell activation. It also affects numerous nonimmunologic biological processes, including cellular adhesion, neurite outgrowth, tumor growth, migration, and cell death.

Storage

Storage:

Store at 2-8°C. Avoid exposure to light. Stable for one year after shipment.

Storage Buffer:

PBS with 0.09% sodium azide and 0.5% BSA, pH7.3

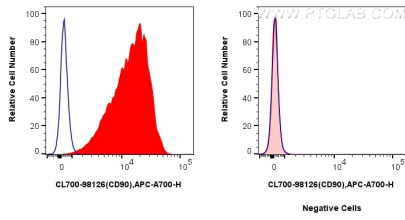
For technical support and original validation data for this product please contact:

T: 1 (888) 4PTGLAB (1-888-478-4522) (toll free in USA), or 1(312) 455-8498 (outside USA)

E: proteintech@ptglab.com
W: ptglab.com

This product is exclusively available under Proteintech Group brand and is not available to purchase from any other manufacturer.

Selected Validation Data



1×10^6 HEL92.1.7 cells (left) or K562 cells (right) were surface stained with 5 μ l CoraLite®700 Anti-Human CD90 Rabbit RecAb (CL700-98126, Clone: 241290B2) (red) or CoraLite®700 Rabbit IgG Isotype Control Recombinant Antibody (CL700-98136, Clone: 240953C9) (blue). Cells were not fixed.