

For Research Use Only

CoraLite®700 Anti-Rat CD4 Rabbit Recombinant Antibody

Catalog Number:CL700-98252



Basic Information

Catalog Number:

CL700-98252

Size:

100ug , 500 ug/ml

Source:

Rabbit

Isotype:

IgG

Immunogen Catalog Number:

EG2025

GenBank Accession Number:

NM_012705.1

GeneID (NCBI):

24932

UNIPROT ID:

P05540

Full Name:

Cd4 molecule

Calculated MW:

51 kDa

Purification Method:

Protein A purification

CloneNo.:

241955C11

Recommended Dilutions:

FC: 0.25 ug per 10⁶ cells in a 100 µl suspension

Excitation/Emission maxima wavelengths:

702 nm / 723 nm

Applications

Tested Applications:

FC

Species Specificity:

rat

Positive Controls:

FC : rat splenocytes,

Background Information

CD4 is a 55-kDa transmembrane glycoprotein expressed on T helper cells, majority of thymocytes, monocytes, macrophages, and dendritic cells (PMID: 9304802; 12213222). CD4 is an accessory protein for MHC class-II antigen/T-cell receptor interaction. It plays an important role in T helper cell development and activation (PMID: 9539765; 3112582). CD4 serves as a receptor for the human immunodeficiency virus (HIV) (PMID: 9304802).

Storage

Storage:

Store at 2-8°C. Avoid exposure to light. Stable for one year after shipment.

Storage Buffer:

PBS with 0.09% sodium azide, pH7.3

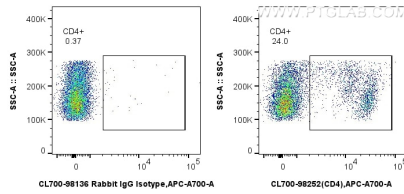
For technical support and original validation data for this product please contact:

T: 1 (888) 4PTGLAB (1-888-478-4522) (toll free in USA), or 1(312) 455-8498 (outside USA)

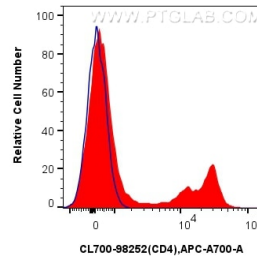
E: proteintech@ptglab.com
W: ptglab.com

This product is exclusively available under Proteintech Group brand and is not available to purchase from any other manufacturer.

Selected Validation Data



1x10⁶ rat splenocytes were surface stained with 0.25 ug CoraLite®700 Anti-Rat CD4 Rabbit RecAb (CL700-98252, Clone: 24195C11) or 0.25 ug CoraLite®700 Rabbit IgG Isotype Control Recombinant Antibody (CL700-98136, Clone: 240953C9). Cells were not fixed.



1x10⁶ rat splenocytes cells were surface stained with 0.25 ug CoraLite®700 Anti-Rat CD4 Rabbit RecAb (CL700-98252, Clone: 24195C11) (red) or 0.25 ug CoraLite®700 Rabbit IgG Isotype Control Recombinant Antibody (CL700-98136, Clone: 240953C9) (blue). Cells were not fixed.