

For Research Use Only

CoraLite® Plus 750-conjugated Talin-1 Polyclonal antibody

Catalog Number: CL750-14168

Featured Product



Basic Information

Catalog Number:

CL750-14168

Size:

100ul, Concentration: 1000 ug/ml by Nanodrop;

Source:

Rabbit

Isotype:

IgG

Immunogen Catalog Number:

AG5367

GenBank Accession Number:

BC042923

GeneID (NCBI):

7094

UNIPROT ID:

Q9Y490

Full Name:

talin 1

Calculated MW:

2541 aa, 270 kDa

Observed MW:

250-270 kDa

Purification Method:

Antigen affinity purification

Recommended Dilutions:

IF/ICC 1:50-1:500

Excitation/Emission maxima wavelengths:

755 nm / 780 nm

Applications

Tested Applications:

IF/ICC, FC (Intra)

Species Specificity:

human, mouse, rat

Positive Controls:

IF/ICC : A549 cells,

Background Information

Talin-1 is a large cytoskeletal protein consisting of a globular head domain and a long rod comprised of a series of α -helical bundles (PMID: 35266014). Talin-1 is ubiquitously expressed and is a major component of focal adhesions which are multi-protein, integrin-containing complexes, mediating cell migration, adhesion and integrin signalling (PMID: 33431906). Talin-1 also plays a role in tumor formation, migration and metastasis in various malignancies (PMID: 37013489).

Storage

Storage:

Store at -20°C. Avoid exposure to light. Stable for one year after shipment.

Storage Buffer:

PBS with 50% Glycerol, 0.05% Proclin300, 0.5% BSA, pH 7.3.

Aliquoting is unnecessary for -20°C storage

For technical support and original validation data for this product please contact:

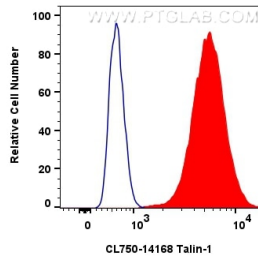
T: 1 (888) 4PTGLAB (1-888-478-4522) (toll free in USA), or 1(312) 455-8498 (outside USA)

E: proteintech@ptglab.com

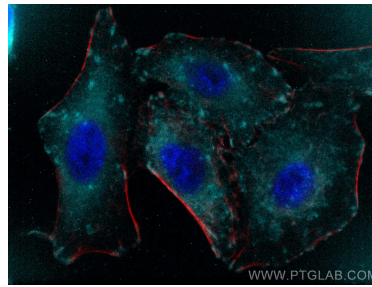
W: ptglab.com

This product is exclusively available under Proteintech Group brand and is not available to purchase from any other manufacturer.

Selected Validation Data



1×10^6 HeLa cells were intracellularly stained with 0.8 μ g CoraLite® Plus 750-conjugated Talin-1 Polyclonal antibody (CL750-14168) (red), or 0.8 μ g Isotype Control (blue). Cells were fixed with 4% PFA and permeabilized with Flow Cytometry Perm Buffer (PF00011-C).



Immunofluorescent analysis of (4% PFA) fixed A549 cells using CoraLite® Plus 750 Talin-1 antibody (CL750-14168) at dilution of 1:200, CL594-phalloidin (red).