

For Research Use Only

# CoraLite® Plus 750 Anti-Human CD107a / LAMP1 (H4A3)



Catalog Number: CL750-65051

## Basic Information

<b>Catalog Number:</b> CL750-65051	<b>GenBank Accession Number:</b> BC006345	<b>Purification Method:</b> Protein G purification
<b>Size:</b> 100tests , 5 µl/test	<b>GeneID (NCBI):</b> 3916	<b>CloneNo.:</b> H4A3
<b>Source:</b> Mouse	<b>Full Name:</b> lysosomal-associated membrane protein 1	<b>Excitation/Emission maxima wavelengths:</b> 755 nm / 780 nm
<b>Isotype:</b> IgG1		

## Applications

**Tested Applications:**  
FC (Intra)

**Species Specificity:**  
Human

## Background Information

LAMP1 (CD107a) is a heavily glycosylated membrane protein enriched in the lysosomal membrane. LAMP1 is extensively glycosylated with asparagine-linked oligosaccharides which protect it from intracellular proteolysis (PMID: 10521503). Although LAMP1 is expressed largely in the endosome-lysosomal membrane of cells, it is also found on the plasma membrane (PMID: 16168398). Elevated LAMP1 expression at the cell surface has also been detected during platelet and granulocytic cell activation, as well as in some tumor cells (PMID: 29085473). LAMP1 functions to provide selectins with carbohydrate ligands. This protein has also been shown to be a marker of degranulation on lymphocytes such as CD8+ and NK cells and may also play a role in tumor cell differentiation and metastasis (PMID: 18835598; 29085473; 9426697).

## Storage

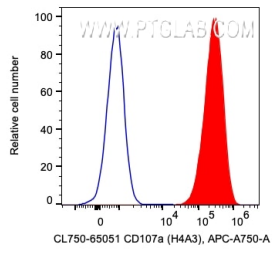
**Storage:**  
Store at 2-8°C. Avoid exposure to light. Stable for one year after shipment.

**Storage Buffer:**  
PBS with 0.09% sodium azide and 0.5% BSA.

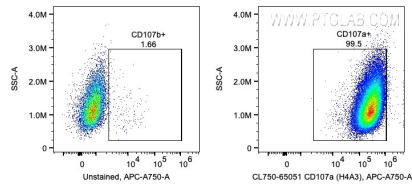
For technical support and original validation data for this product please contact:  
T: 1 (888) 4PTGLAB (1-888-478-4522) (toll free in USA), or 1(312) 455-8498 (outside USA) E: proteintech@ptglab.com W: ptglab.com

This product is exclusively available under Proteintech Group brand and is not available to purchase from any other manufacturer.

## Selected Validation Data



1X10<sup>6</sup> HeLa cells were intracellularly stained with 5 ul CoraLite® Plus 750 Anti-Human LAMP1 (CL750-65051, Clone:H4A3). Cells were fixed with 4% PFA and permeabilized with Intracellular Staining Permeabilization Wash Buffer.



1X10<sup>6</sup> HeLa cells were intracellularly stained with 5 ul CoraLite® Plus 750 Anti-Human LAMP1 (CL750-65051, Clone:H4A3). Cells were fixed with 4% PFA and permeabilized with Intracellular Staining Permeabilization Wash Buffer.