

For Research Use Only

CoraLite® Plus 750 Anti-Mouse KLRG1 (2F1)



Catalog Number: **CL750-65084**

Basic Information

Catalog Number: CL750-65084	GenBank Accession Number: BC101953	Purification Method: Affinity purification
Size: 100ug, 0.5 mg/ml	GeneID (NCBI): 50928	CloneNo.: 2F1
Source: Golden Syrian Hamster	Full Name: killer cell lectin-like receptor subfamily G, member 1	Excitation/Emission maxima wavelengths: 755 nm / 780 nm
Isotype: IgG		

Applications

Tested Applications:
FC

Species Specificity:
Mouse

Background Information

KLRG1 (killer cell lectin-like receptor subfamily G, member 1) is a C-type lectin inhibitory receptor that contains an immunoreceptor tyrosine-based inhibitory motif (ITIM) in its cytoplasmic domain. KLRG1 is expressed by subsets of NK and T cells, existing both as a monomer and as a disulfide-linked homodimer (PMID: 10741410; 19604491). It is considered to be a cell differentiation marker for NK and T cells and is strongly induced by viral and other infections (PMID: 20373518). Through interactions with members of the cadherin family, KLRG1 plays an inhibitory role on NK- and T-cell function (PMID: 19009530; 20373518).

Storage

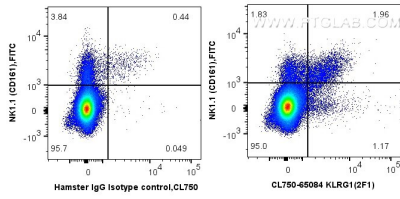
Storage:
Store at 2-8°C. Avoid exposure to light. Stable for one year after shipment.

Storage Buffer:
PBS with 0.09% sodium azide.

For technical support and original validation data for this product please contact:
T: 1 (888) 4PTGLAB (1-888-478-4522) (toll free in USA), or 1(312) 455-8498 (outside USA) E: proteintech@ptglab.com
W: ptglab.com

This product is exclusively available under Proteintech Group brand and is not available to purchase from any other manufacturer.

Selected Validation Data



1X10⁶ mouse splenocytes were surface co-stained with FITC Anti-Mouse NK1.1 (CD161) and 0.5 μ g CoraLite[®] Plus 750 Anti-Mouse KLRG1 (CL750-65084, Clone: 2F1) or 0.5 μ g Isotype Control. Cells were not fixed.