

For Research Use Only

CoraLite® Plus 750 Anti-Human MICA/MICB (6D4)



Catalog Number:CL750-65161

Basic Information

Catalog Number:
CL750-65161

Size:
100tests , 5 µl/test

Source:
Mouse

Isotype:
IgG2a, kappa

GenBank Accession Number:
BC016929

GeneID (NCBI):
4276

Full Name:
MHC class I polypeptide-related
sequence A

Calculated MW:
383 aa, 43 kDa

Purification Method:
Purified by protein-A affinity
chromatography

CloneNo.:
6D4

Applications

Tested Applications:
FC

Species Specificity:
Human

Background Information

Human MHC class I chain-related genes located within the HLA class I region of chromosome 6 encode MHC class I chain-related A and B (MICA and MICB) (PMID: 11429322). MICA and MICB are stress-inducible surface molecules that are not associated with β 2-microglobulin and do not present peptides (PMID: 9497295). They are expressed in intestinal epithelium and many epithelial tumors (PMID: 10359807). MICA and MICB are ligands for NKG2D which is an activating receptor that is expressed on most natural killer (NK) cells, CD8 $\alpha\beta$ T cells, and $\gamma\delta$ T cells (PMID: 10426993; 11491531). The monoclonal antibody 6D4 recognizes MICA and MICB.

Storage

Storage:

Store at 2-8°C. Avoid exposure to light. Stable for one year after shipment.

Storage Buffer:

PBS with 0.09% sodium azide and 0.5% BSA.

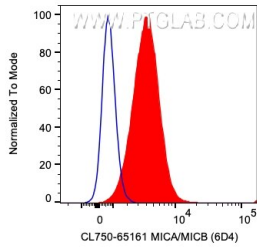
For technical support and original validation data for this product please contact:

T: 1 (888) 4PTGLAB (1-888-478-4522) (toll free
in USA), or 1(312) 455-8498 (outside USA)

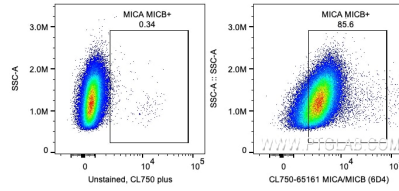
E: proteintech@ptglab.com
W: ptglab.com

This product is exclusively available under Proteintech Group brand and is not available to purchase from any other manufacturer.

Selected Validation Data



1X10⁶ HeLa cells were surface stained with 5 ul CoraLite® Plus 750 Anti-Human MICA/MICB (CL750-65161, Clone:6D4). Cells were not fixed.



1X10⁶ HeLa cells were surface stained with 5 ul CoraLite® Plus 750 Anti-Human MICA/MICB (CL750-65161, Clone:6D4). Cells were not fixed.