

For Research Use Only

# CoraLite® Plus 750 Anti-Human CD62L (DREG56)



Catalog Number:CL750-65167

## Basic Information

<b>Catalog Number:</b> CL750-65167	<b>GenBank Accession Number:</b> BC020758	<b>Purification Method:</b> Purified by protein-A affinity chromatography
<b>Size:</b> 100tests , 5 ul/test	<b>GeneID (NCBI):</b> 6402	<b>CloneNo.:</b> DREG56
<b>Source:</b> Mouse	<b>Full Name:</b> selectin L	<b>Excitation/Emission maxima wavelengths:</b> 755 nm / 780 nm
<b>Isotype:</b> IgG1, kappa	<b>Calculated MW:</b> 42 kDa	

## Applications

**Tested Applications:**  
FC

**Species Specificity:**  
Human

## Background Information

CD62L, also known as L-selectin or SELL, is a member of the selectin family of adhesion molecules that also include CD62E (E-selectin) and CD62P (P-selectin) (PMID: 2663882, 2473156, 1382078). CD62L is a highly glycosylated protein of 95-105 kDa on neutrophils and 74 kDa on lymphocytes (PMID: 1382078; 1694883, 1695155). CD62L is expressed on the surface of most leukocytes, including lymphocytes, neutrophils, monocytes, eosinophils, hematopoietic progenitor cells, and immature thymocytes (PMID: 1694883, 1688580). It mediates the binding of lymphocytes to high endothelial venules (HEV) of peripheral lymph nodes through interactions with a constitutively expressed ligand, and is also involved in lymphocyte, neutrophil, and monocyte attachment to endothelium at sites of inflammation (PMID: 1382078).

## Storage

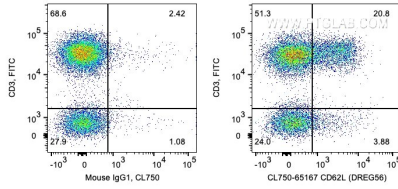
**Storage:**  
Store at 2-8°C. Avoid exposure to light. Stable for one year after shipment.

**Storage Buffer:**  
PBS with 0.09% sodium azide and 0.5% BSA.

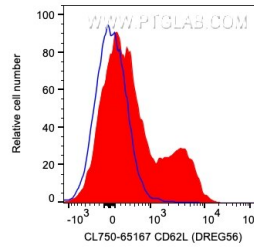
For technical support and original validation data for this product please contact:  
T: 1 (888) 4PTGLAB (1-888-478-4522) (toll free in USA), or 1(312) 455-8498 (outside USA) E: proteintech@ptglab.com W: ptglab.com

This product is exclusively available under Proteintech Group brand and is not available to purchase from any other manufacturer.

## Selected Validation Data



1X10<sup>6</sup> human PBMCs were surface co-stained with FITC Anti-Human CD3 and 5 ul CoraLite® Plus 750 Anti-Human CD62L (CL750-65167, Clone: DREG56) or Mouse IgG1 Isotype Control. Cells were not fixed. Lymphocytes were gated.



1X10<sup>6</sup> human PBMCs were surface co-stained with FITC Anti-Human CD3 and 5 ul CoraLite® Plus 750 Anti-Human CD62L (CL750-65167, Clone: DREG56) or Mouse IgG1 Isotype Control. Cells were not fixed. CD3<sup>+</sup> Lymphocytes were gated.