

For Research Use Only

CoraLite® Plus 750 Anti-Human CD13 (WM15)



Catalog Number: CL750-65186

Basic Information

Catalog Number: CL750-65186	GenBank Accession Number: BC058928	Purification Method: Purified by protein-A affinity chromatography
Size: 100tests , 5 µl/test	GeneID (NCBI): 290	CloneNo.: WM15
Source: Mouse	Full Name: alanyl (membrane) aminopeptidase	
Isotype: IgG1, kappa	Calculated MW: 110 kDa	

Applications

Tested Applications:
FC

Species Specificity:
Human, Non-human primates

Background Information

CD13, also named as APN, ANPEP (aminopeptidase N) or PEPN, is belongs to the peptidase M1 family. CD13 is a heavily glycosylated, ~150-240 kDa, type-II membrane, expressed by most cells of myeloid origin including monocytes, macrophages, granulocytes, and their hematopoietic precursors. It is also abundantly expressed in the brush border of epithelial cells from renal proximal tubules and small intestine, in prostatic epithelial cells, in bile duct canaliculi, in mast cells, and, in some cases, in fibroblasts and smooth muscle cells. CD13 is a multifunctional protein and plays varying roles in cell migration, cell proliferation, cell differentiation and so on. CD13 participates in angiogenesis generating and modulating angiogenic signals, and can be a marker of angiogenic vessels. CD13 is also a pan-myeloid marker, present on mature granulocytes and monocytes. (PMID: 8805662, 10098327, 18603472, 18097955, 17897790, 17888402, 21339174)

Storage

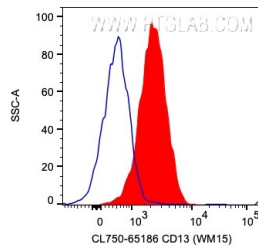
Storage:
Store at 2-8°C. Avoid exposure to light. Stable for one year after shipment.

Storage Buffer:
PBS with 0.09% sodium azide and 0.5% BSA.

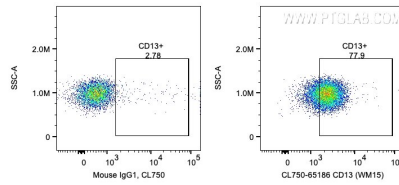
For technical support and original validation data for this product please contact:
T: 1 (888) 4PTGLAB (1-888-478-4522) (toll free in USA), or 1(312) 455-8498 (outside USA)
E: proteintech@ptglab.com
W: ptglab.com

This product is exclusively available under Proteintech Group brand and is not available to purchase from any other manufacturer.

Selected Validation Data



1X10⁶ human whole blood granulocytes were surface stained with 5 ul CoraLite® Plus 750 Anti-Human CD13 (CL750-65186, Clone: WM15) or Mouse IgG1 Isotype Control. Cells were not fixed.



1X10⁶ human whole blood granulocytes were surface stained with 5 ul CoraLite® Plus 750 Anti-Human CD13 (CL750-65186, Clone: WM15) or Mouse IgG1 Isotype Control. Cells were not fixed.