

For Research Use Only

CoraLite® Plus 750 Anti-Human CD29 (TS2/16)



Catalog Number: CL750-65191

Basic Information

Catalog Number: CL750-65191	GenBank Accession Number: BC020057	Purification Method: Affinity purification
Size: 100tests , 5 µl/test	GeneID (NCBI): 3688	CloneNo.: TS2/16
Source: Mouse	Full Name: integrin, beta 1 (fibronectin receptor, beta polypeptide, antigen CD29 includes MDF2, MSK12)	
Isotype: IgG1, kappa	Calculated MW: 88 kDa	

Applications

Tested Applications:
FC

Species Specificity:
Human

Background Information

Integrin beta-1 (ITGB1), also named as CD29, is a 130 kDa single chain type I glycoprotein that is expressed in a heterodimeric complex with one of six distinct α subunits, comprising the very late activation antigen (VLA) subfamily of adhesion receptors. It is one of the essential surface molecules expressed on human MSC from bone marrow and other sources. The β 1 subunit is also broadly expressed on lymphocytes and monocytes, weakly expressed on granulocytes, and not expressed on erythrocytes. These receptors are involved in a variety of cell-cell and cell-matrix interactions.

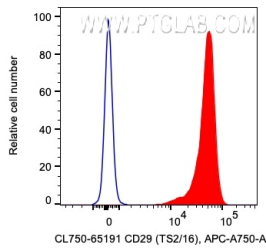
Storage

Storage:
Store at 2-8°C. Avoid exposure to light. Stable for one year after shipment.
Storage Buffer:
PBS with 0.09% sodium azide and 0.5% BSA.

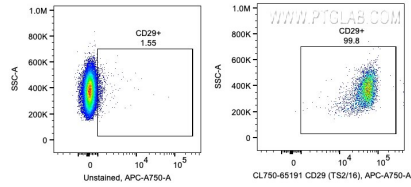
For technical support and original validation data for this product please contact:
T: 1 (888) 4PTGLAB (1-888-478-4522) (toll free in USA), or 1(312) 455-8498 (outside USA) E: proteintech@ptglab.com W: ptglab.com

This product is exclusively available under Proteintech Group brand and is not available to purchase from any other manufacturer.

Selected Validation Data



1X10⁶ human PBMCs were surface stained with 5 ul CoraLite® Plus 750 Anti-Human CD29 (CL750-65191, Clone:TS2/16) or unstained. Cells were not fixed. Monocytes were gated.



1X10⁶ human PBMCs were surface stained with 5 ul CoraLite® Plus 750 Anti-Human CD29 (CL750-65191, Clone:TS2/16) or unstained. Cells were not fixed. Monocytes were gated.