

For Research Use Only

CoraLite® Plus 750 Anti-Rat CD45RA (OX-33)



Catalog Number: **CL750-65234**

Basic Information

Catalog Number: CL750-65234	GenBank Accession Number: XM_006249910	Purification Method: N/A
Size: 100ug , 500 µg/ml	GeneID (NCBI): 24699	CloneNo.: OX-33
Source: Mouse	Full Name: protein tyrosine phosphatase, receptor type, C	Excitation/Emission maxima wavelengths: 755 nm / 780 nm
Isotype: IgG1, kappa	Calculated MW: 143 kDa	

Applications

Tested Applications:
FC

Species Specificity:
Rat

Background Information

CD45, also known as protein tyrosine phosphatase, receptor type C, is a type I transmembrane protein expressed on the surface of all haematopoietic cells with the exception of erythrocytes and platelets (PMID: 3489673; 28615666). CD45 is a pan-haematopoietic cell marker and has been shown to be essential for T- and B-cell activation and signalling (PMID: 9429890; 16378097). CD45 exists as multiple isoforms due to alternative splicing of three exons (4, 5, and 6, designated A, B, and C) in the extracellular domain (PMID: 12414720). CD45RA is expressed on naïve T cells, B cells, and monocytes (PMID: 1830500; 14687231).

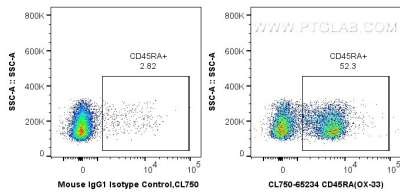
Storage

Storage:
Store at 2-8°C. Avoid exposure to light. Stable for one year after shipment.
Storage Buffer:
PBS with 0.09% sodium azide.

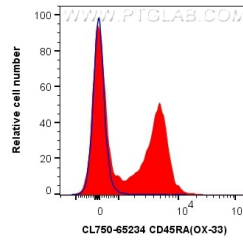
For technical support and original validation data for this product please contact:
T: 1 (888) 4PTGLAB (1-888-478-4522) (toll free in USA), or 1(312) 455-8498 (outside USA) E: proteintech@ptglab.com
W: ptglab.com

This product is exclusively available under Proteintech Group brand and is not available to purchase from any other manufacturer.

Selected Validation Data



1X10⁶ rat splenocytes were surface stained with 0.5 ug CoraLite® Plus 750 Anti-Rat CD45RA (CL750-65234, Clone: OX-33), or 0.5 ug CoraLite® Plus 750 Mouse IgG1 Isotype Control (MOPC-21) (CL750-65124, Clone: MOPC-21). Cells were not fixed.



1X10⁶ rat splenocytes were surface stained with 0.5 ug CoraLite® Plus 750 Anti-Rat CD45RA (CL750-65234, Clone: OX-33) (red), or 0.5 ug CoraLite® Plus 750 Mouse IgG1 Isotype Control (MOPC-21) (CL750-65124, Clone: MOPC-21) (blue). Cells were not fixed.