

For Research Use Only

CoraLite® Plus 750 Anti-Human IL-12 (1E12H6)



Catalog Number: **CL750-65277**

Basic Information

Catalog Number: CL750-65277	GenBank Accession Number: BC104982	Purification Method: Affinity purification
Size: 100ug, 0.2 mg/mL	GeneID (NCBI): 3592	CloneNo.: 1E12H6
Source: Mouse	Full Name: interleukin 12A (natural killer cell stimulatory factor 1, cytotoxic lymphocyte maturation factor 1, p35)	Excitation/Emission maxima wavelengths: 755 nm / 780 nm
Isotype: IgG1	Calculated MW: 25 kDa	
Immunogen Catalog Number: HZ-1256		

Applications

Tested Applications:
FC (Intra)

Species Specificity:
Human

Background Information

IL-12 is a heterodimeric cytokine composed of two glycosylated and disulfide-linked subunits (p40 cysteine-linked to p35). IL-12 is a potent regulator of cell mediated immune responses and it induces IFN-gamma production by NK and T cells. It is produced by activated monocytes/macrophage cells, B lymphocytes, and connective tissue type mast cells (PMID: 24821971; 7612223).

Storage

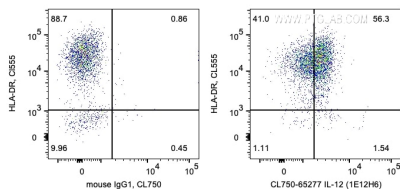
Storage:
Store at 2-8°C. Avoid exposure to light. Stable for one year after shipment.

Storage Buffer:
PBS with 0.09% sodium azide and 0.5% BSA.

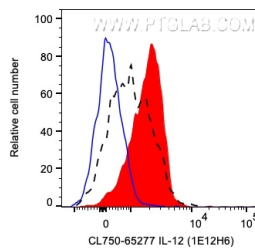
For technical support and original validation data for this product please contact:
T: 1 (888) 4PTGLAB (1-888-478-4522) (toll free in USA), or 1(312) 455-8498 (outside USA)
E: proteintech@ptglab.com
W: ptglab.com

This product is exclusively available under Proteintech Group brand and is not available to purchase from any other manufacturer.

Selected Validation Data



1X10⁶ LPS and Brefeldin A treated human PBMCs were surface stained with CoraLite® Plus 555 Anti-Human HLA-DR then intracellularly stained with 0.2 ug CoraLite® Plus 750 Anti-Human IL-12 (CL750-65277, Clone:1E12H6) or Mouse IgG1 Isotype Control. Cells were fixed and permeabilized with Transcription Factor Staining Buffer Kit (PF00011). Monocytes were gated.



1X10⁶ LPS and Brefeldin A treated human PBMCs were intracellularly stained with 0.2 ug CoraLite® Plus 750 Anti-Human IL-12 (CL750-65277, Clone:1E12H6) (red) or Mouse IgG1 Isotype Control (blue), or unactivated and Brefeldin A treated human PBMCs were intracellularly stained with 0.2 ug CoraLite® Plus 750 Anti-Human IL-12 (CL750-65277, Clone:1E12H6) (black, dashed line). Cells were fixed and permeabilized with Transcription Factor Staining Buffer Kit

