

For Research Use Only

# CoraLite® Plus 750 Anti-Human STRO-1 (STRO-1) Mouse IgG2a Recombinant Antibody

Catalog Number: CL750-65585



## Basic Information

Catalog Number:

CL750-65585

Size:

100tests , 5 ul/test

Source:

Mouse

Isotype:

IgG2a

GenBank Accession Number:

GeneID (NCBI):

Full Name:

Purification Method:

Protein A purification

CloneNo.:

STRO-1

Recommended Dilutions:

FC: 5 ul per 10<sup>6</sup> cells in a 100 µl suspension

Excitation/Emission maxima wavelengths:

755 nm / 780 nm

## Applications

Tested Applications:

FC

Species Specificity:

human

Positive Controls:

FC : Human bone marrow mesenchymal stromal cells,

## Storage

Storage:

Store at 2-8°C. Avoid exposure to light. Stable for one year after shipment.

Storage Buffer:

PBS with 0.09% sodium azide and 0.5% BSA, pH7.3

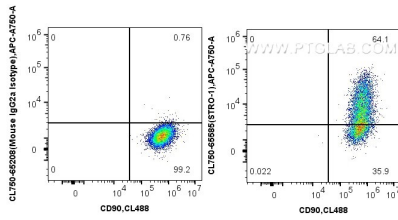
For technical support and original validation data for this product please contact:

T: 1 (888) 4PTGLAB (1-888-478-4522) (toll free in USA), or 1(312) 455-8498 (outside USA)

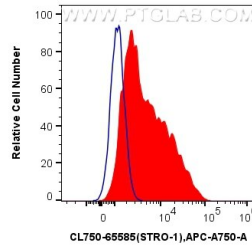
E: [proteintech@ptglab.com](mailto:proteintech@ptglab.com)  
W: [ptglab.com](http://ptglab.com)

This product is exclusively available under Proteintech Group brand and is not available to purchase from any other manufacturer.

## Selected Validation Data



1x10<sup>6</sup> human bone marrow mesenchymal stromal cells were surface stained with CoraLite® Plus 488 Anti-Human CD90, and 5 ul CoraLite® Plus 750 Anti-Human STRO-1 (STRO-1) Mouse IgG2a RecAb (CL750-65585, Clone: STRO-1) or CoraLite® Plus 750 Mouse IgG2a Isotype Control (C1.18.4) (CL750-65208, Clone: C1.18.4). Cells were not fixed.



1x10<sup>6</sup> human bone marrow mesenchymal stromal cells were surface stained with 5 ul CoraLite® Plus 750 Anti-Human STRO-1 (STRO-1) Mouse IgG2a RecAb (CL750-65585, Clone: STRO-1)(red) or CoraLite® Plus 750 Mouse IgG2a Isotype Control (C1.18.4) (CL750-65208, Clone: C1.18.4) (blue). Cells were not fixed.