

For Research Use Only

CoraLite® Plus 750 Anti-Human CD45RA (F8-11-13) Mouse IgG2a Recombinant Antibody

Catalog Number: CL750-65590



Basic Information

Catalog Number:

CL750-65590

Size:

100tests , 5 ul/test

Source:

Mouse

Isotype:

IgG2a

GenBank Accession Number:

BC014239

GeneID (NCBI):

5788

ENSEMBL Gene ID:

ENSG0000081237

UNIPROT ID:

P08575

Full Name:

protein tyrosine phosphatase, receptor type, C

Calculated MW:

1304 aa, 147 kDa

Purification Method:

Protein A purification

CloneNo.:

F8-11-13

Recommended Dilutions:

FC: 5 ul per 10⁶ cells in a 100 µl suspension

Excitation/Emission maxima wavelengths:

755 nm / 780 nm

Applications

Tested Applications:

FC

Species Specificity:

human

Positive Controls:

FC : human PBMCs,

Background Information

CD45, also known as protein tyrosine phosphatase, receptor type C, is a type I transmembrane protein expressed on the surface of all haematopoietic cells with the exception of erythrocytes and platelets (PMID: 3489673; 28615666). CD45 is a pan-haematopoietic cell marker and has been shown to be essential for T- and B-cell activation and signalling (PMID: 9429890; 16378097). CD45 exists as multiple isoforms due to alternative splicing of three exons (4, 5, and 6, designated A, B, and C) in the extracellular domain (PMID: 12414720). CD45RA is expressed on naïve T cells, B cells, and monocytes (PMID: 1830500; 14687231).

Storage

Storage:

Store at 2-8°C. Avoid exposure to light. Stable for one year after shipment.

Storage Buffer:

PBS with 0.09% sodium azide and 0.5% BSA, pH7.3

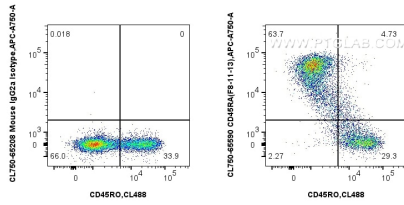
For technical support and original validation data for this product please contact:

T: 1 (888) 4PTGLAB (1-888-478-4522) (toll free in USA), or 1(312) 455-8498 (outside USA)

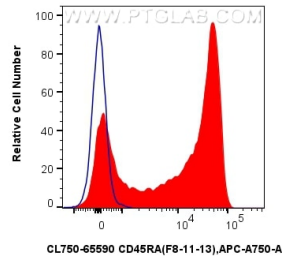
E: proteintech@ptglab.com
W: ptglab.com

This product is exclusively available under Proteintech Group brand and is not available to purchase from any other manufacturer.

Selected Validation Data



1x10⁶ human PBMCs were surface stained with CoraLite® Plus 488 Anti-Human CD45RO, and 5 ul CoraLite® Plus 750 Anti-Human CD45RA (F8-11-13) Mouse IgG2a RecAb (CL750-65590, Clone: F8-11-13) or CoraLite® Plus 750 Mouse IgG2a Isotype Control (C1.18.4) (CL750-65208, Clone: C1.18.4). Cells were not fixed. Lymphocytes were gated.



1x10⁶ human PBMCs were surface stained with 5 ul CoraLite® Plus 750 Anti-Human CD45RA (F8-11-13) Mouse IgG2a RecAb (CL750-65590, Clone: F8-11-13) (red) or CoraLite® Plus 750 Mouse IgG2a Isotype Control (C1.18.4) (CL750-65208, Clone: C1.18.4) (blue). Cells were not fixed. Lymphocytes were gated.