

For Research Use Only

CoraLite® Plus 750 Anti-Human LRP1 (5A6) Mouse IgG2a Recombinant Antibody

Catalog Number: CL750-65594



Basic Information

Catalog Number: CL750-65594	GenBank Accession Number: BC045107	Purification Method: Protein A purification
Size: 100tests , 5 ul/test	GeneID (NCBI): 4035	CloneNo.: 5A6
Source: Mouse	UNIPROT ID: Q07954	Recommended Dilutions: FC: 5 ul per 10 ⁶ cells in a 100 µl suspension
Isotype: IgG2a	Full Name: low density lipoprotein-related protein 1 (alpha-2-macroglobulin receptor)	Excitation/Emission maxima wavelengths: 755 nm / 780 nm
	Calculated MW: 505 kDa	

Applications

Tested Applications: FC	Positive Controls: FC : U-87 MG cells,
Species Specificity: human	

Background Information

LRP1 (Pro-low-density lipoprotein receptor-related protein 1), also known as A2MR, APOER and CD91, is a type I transmembrane protein that belongs to the LDLR family. LRP1 is synthesized as a transmembrane glycosylated precursor of 600 kDa, and is subsequently cleaved to generate a large 515-kDa N-terminal extracellular subunit and an 85-kDa C-terminal transmembrane subunit, which are noncovalently associated with one another (PMID: 2112085; 8546712). LRP1 is a multifunctional receptor involved in the clearance of a large number of diverse ligands and modulating various cellular processes. LRP1 is implicated in conditions such as atherosclerosis, cancer and neurodegenerative diseases (PMID: 28381441).

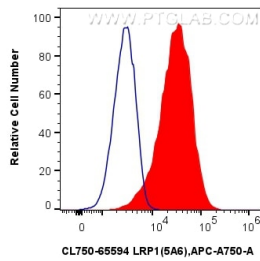
Storage

Storage:
Store at 2-8°C. Avoid exposure to light. Stable for one year after shipment.
Storage Buffer:
PBS with 0.09% sodium azide and 0.5% BSA, pH7.3

For technical support and original validation data for this product please contact:
T: 1 (888) 4PTGLAB (1-888-478-4522) (toll free in USA), or 1(312) 455-8498 (outside USA)
E: proteintech@ptglab.com
W: ptglab.com

This product is exclusively available under Proteintech Group brand and is not available to purchase from any other manufacturer.

Selected Validation Data



1x10⁶ U-87 MG cells were surface stained with 5 ul CoraLite® Plus 750 Anti-Human LRP1 (5A6) Mouse IgG2a RecAb (CL750-65594, Clone: 5A6) (red) or CoraLite® Plus 750 Mouse IgG2a Isotype Control (C1.18.4) (CL750-65208, Clone: C1.18.4) (blue). Cells were not fixed.