

For Research Use Only

# CoraLite® Plus 750-conjugated 6\*His, His-Tag Monoclonal antibody



Catalog Number: CL750-66005

## Basic Information

<b>Catalog Number:</b> CL750-66005	<b>GenBank Accession Number:</b> GeneID (NCBI):	<b>Purification Method:</b> Protein G purification
<b>Size:</b> 100ul , Concentration: 1000 µg/ml by Nanodrop;	<b>Full Name:</b> <b>Calculated MW:</b> 1 kDa	<b>CloneNo.:</b> 1B7G5
<b>Source:</b> Mouse		<b>Recommended Dilutions:</b> WB 1:1000-1:4000
<b>Isotype:</b> IgG1		<b>Excitation/Emission maxima wavelengths:</b> 755 nm / 780 nm

## Applications

<b>Tested Applications:</b> WB	<b>Positive Controls:</b> WB : Transfected HEK-293T cells,
<b>Species Specificity:</b> recombinant protein	

## Background Information

Protein tags are protein or peptide sequences located either on the C- or N- terminal of the target protein, which facilitates one or several of the following characteristics: solubility, detection, purification, localization and expression. His-tag is often used for affinity purification and binding assays. Expressed His-tagged proteins can be purified and detected easily because the string of histidine residues binds to several types of immobilized metal ions, including nickel, cobalt and copper, under specific buffer conditions. The His-tag antibody is a useful tool for monitoring of the His-tagged proteins, and recognizes His-tags placed at N-terminal, C-terminal, and internal regions of fusion proteins expressed in bacteria, insect, and mammalian cells.

## Storage

**Storage:**  
Store at -20°C. Avoid exposure to light. Stable for one year after shipment.  
**Storage Buffer:**  
PBS with 50% Glycerol, 0.05% Proclin300, 0.5% BSA, pH 7.3.  
Aliquoting is unnecessary for -20°C storage

\*\*\* 20ul sizes contain 0.1% BSA

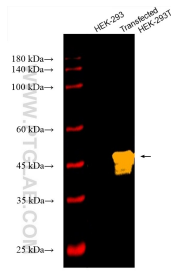
For technical support and original validation data for this product please contact:

T: 1 (888) 4PTGLAB (1-888-478-4522) (toll free  
in USA), or 1(312) 455-8498 (outside USA)

E: proteintech@ptglab.com  
W: ptglab.com

This product is exclusively available under Proteintech Group brand and is not available to purchase from any other manufacturer.

## Selected Validation Data



Various lysates were subjected to SDS PAGE followed by western blot with CL750-66005 (6<sup>+</sup>His, His-Tag antibody) at dilution of 1:2000 incubated at room temperature for 1.5 hours.