

For Research Use Only

CoraLite® Plus 750-conjugated Albumin Monoclonal antibody

Catalog Number:CL750-66051



Basic Information

Catalog Number: CL750-66051	GenBank Accession Number: BC034023	Purification Method: Protein G purification
Size: 100ul , Concentration: 1000 ug/ml by Nanodrop;	GeneID (NCBI): 213	CloneNo.: 4A1C11
Source: Mouse	UNIPROT ID: P02768	Recommended Dilutions: WB 1:1000-1:8000
Isotype: IgG1	Full Name: albumin	Excitation/Emission maxima wavelengths: 755 nm / 780 nm
Immunogen Catalog Number: AG9885	Calculated MW: 609 aa, 69 kDa	
	Observed MW: 66 kDa	

Applications

Tested Applications: WB	Positive Controls: WB : HepG2 cells, human plasma
Species Specificity: human, rat, pig	

Background Information

Albumin is the most abundant protein in blood plasma. Alterations of level of serum albumin are linked to variety of diseases. Albumin is expressed exclusively by well-differentiated hepatocytes, thus anti-albumin has been used to mark hepatocytes. (21388516, 23832071) In addition, glycated serum albumin is also a potential diabetes biomarker.

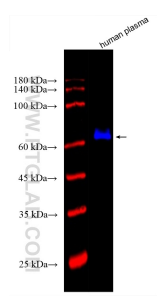
Storage

Storage:
Store at -20°C. Avoid exposure to light. Stable for one year after shipment.
Storage Buffer:
PBS with 50% Glycerol, 0.05% Proclin300, 0.5% BSA, pH 7.3.
Aliquoting is unnecessary for -20°C storage

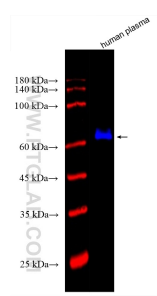
For technical support and original validation data for this product please contact:
T: 1 (888) 4PTGLAB (1-888-478-4522) (toll free in USA), or 1(312) 455-8498 (outside USA)
E: proteintech@ptglab.com
W: ptglab.com

This product is exclusively available under Proteintech Group brand and is not available to purchase from any other manufacturer.

Selected Validation Data



Various lysates were subjected to SDS PAGE followed by western blot with CL750-66051 (Albumin antibody) at dilution of 1:4000 incubated at room temperature for 1.5 hours.



Various lysates were subjected to SDS PAGE followed by western blot with CL750-66051 (Albumin antibody) at dilution of 1:4000 incubated at room temperature for 1.5 hours.