

For Research Use Only

CoraLite® Plus 750-conjugated TBP Monoclonal antibody

Catalog Number: CL750-66166



Basic Information

Catalog Number: CL750-66166	GenBank Accession Number: BC110341	Purification Method: Protein A purification
Size: 100ul , Concentration: 1000 ug/ml by Nanodrop;	GeneID (NCBI): 6908	CloneNo.: 2H3B2
Source: Mouse	UNIPROT ID: P20226	Recommended Dilutions: WB 1:5000-1:50000
Isotype: IgG2a	Full Name: TATA box binding protein	Excitation/Emission maxima wavelengths: 755 nm / 780 nm
Immunogen Catalog Number: AG12383	Calculated MW: 338 aa, 38 kDa	
	Observed MW: mouse/rat 33-36 kDa and human 37-43kDa	

Applications

Tested Applications: WB	Positive Controls: WB : HEK-293 cells, HepG2 cells, Jurkat cells
Species Specificity: human, mouse, rat, pig	

Background Information

The TATA binding protein (TBP) is a transcription factor that binds specifically to a DNA sequence TATA box. This DNA sequence is found about 25-30 base pairs upstream of the transcription start site in some eukaryotic gene promoters. TBP, along with a variety of TBP-associated factors, make up the TFIID, a general transcription factor that in turn makes up part of the RNA polymerase II preinitiation complex. As one of the few proteins in the preinitiation complex that binds DNA in a sequence-specific manner, it helps position RNA polymerase II over the transcription start site of the gene. However, it is estimated that only 10-20% of human promoters have TATA boxes. Therefore, TBP is probably not the only protein involved in positioning RNA polymerase II. This antibody detects human TBP (~40 kDa) and mouse/rat Tbp (~35 kDa).

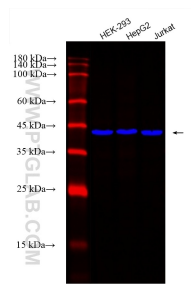
Storage

Storage:
Store at -20°C. Avoid exposure to light. Stable for one year after shipment.
Storage Buffer:
PBS with 50% Glycerol, 0.05% Proclin300, 0.5% BSA, pH 7.3.
Aliquoting is unnecessary for -20°C storage

For technical support and original validation data for this product please contact:
T: 1 (888) 4PTGLAB (1-888-478-4522) (toll free in USA), or 1(312) 455-8498 (outside USA)
E: proteintech@ptglab.com
W: ptglab.com

This product is exclusively available under Proteintech Group brand and is not available to purchase from any other manufacturer.

Selected Validation Data



Various lysates were subjected to SDS PAGE followed by western blot with CL750-66166 (TBP antibody) at dilution of 1:20000 incubated at room temperature for 1.5 hours.