

For Research Use Only

CoraLite® Plus 750-conjugated CD68 Monoclonal antibody



Catalog Number:CL750-66231

Basic Information

Catalog Number: CL750-66231	GenBank Accession Number: BC015557	Purification Method: Protein G purification
Size: 100ul , Concentration: 1000 µg/ml by Nanodrop;	GeneID (NCBI): 968	CloneNo.: 3A9A7
Source: Mouse	Full Name: CD68 molecule	Recommended Dilutions: WB 1:500-1:1000
Isotype: IgG1	Calculated MW: 37 kDa	Excitation/Emission maxima wavelengths: 755 nm / 780 nm
Immunogen Catalog Number: AG22815	Observed MW: 70-100 kDa	

Applications

Tested Applications: WB	Positive Controls: WB : U-937 cells, RAW 264.7 cells
Species Specificity: human, mouse	

Background Information

CD68 is a type I transmembrane glycoprotein that is highly expressed by human monocytes and tissue macrophages. It belongs to the lysosomal/endosomal-associated membrane glycoprotein (LAMP) family and primarily localizes to lysosomes and endosomes with a smaller fraction circulating to the cell surface. CD68 is also a member of the scavenger receptor family. It may play a role in phagocytic activities of tissue macrophages.

Storage

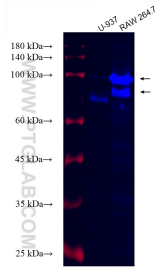
Storage:
Store at -20°C. Avoid exposure to light. Stable for one year after shipment.
Storage Buffer:
PBS with 50% Glycerol, 0.05% Proclin300, 0.5% BSA, pH 7.3.
Aliquoting is unnecessary for -20°C storage

*** 20ul sizes contain 0.1% BSA

For technical support and original validation data for this product please contact:
T: 1 (888) 4PTGLAB (1-888-478-4522) (toll free in USA), or 1(312) 455-8498 (outside USA)
E: proteintech@ptglab.com
W: ptglab.com

This product is exclusively available under Proteintech Group brand and is not available to purchase from any other manufacturer.

Selected Validation Data



Various lysates were subjected to SDS PAGE followed by western blot with CL750-66231 (CD68 antibody) at dilution of 1:500 incubated at room temperature for 1.5 hours.