

For Research Use Only

# CoraLite® Plus 750-conjugated Beta Tubulin Monoclonal antibody



Catalog Number: CL750-66240

## Basic Information

<b>Catalog Number:</b> CL750-66240	<b>GenBank Accession Number:</b> BC000748	<b>Purification Method:</b> Protein A purification
<b>Size:</b> 100ul , Concentration: 1000 µg/ml by Nanodrop;	<b>GeneID (NCBI):</b> 10381	<b>CloneNo.:</b> 1D4A4
<b>Source:</b> Mouse	<b>Full Name:</b> tubulin, beta 3	<b>Recommended Dilutions:</b> WB 1:1000-1:8000
<b>Isotype:</b> IgG2a	<b>Calculated MW:</b> 450 aa, 50 kDa	<b>Excitation/Emission maxima wavelengths:</b> 755 nm / 780 nm
<b>Immunogen Catalog Number:</b> AG0117	<b>Observed MW:</b> 50-55 kDa	

## Applications

<b>Tested Applications:</b> WB	<b>Positive Controls:</b> WB : HeLa cells, Jurkat cells. HEK-293 cells
<b>Species Specificity:</b> human, mouse, rat, nematode, pig, zebrafish	

## Background Information

There are five tubulins in human cells: alpha, beta, gamma, delta, and epsilon. Tubulins are conserved across species. They form heterodimers, which multimerize to form a microtubule filament. An alpha and beta tubulin heterodimer is the basic structural unit of microtubules. The heterodimer does not come apart, once formed. The alpha and beta tubulins, which are each about 55 kDa MW, are homologous but not identical. Alpha and beta tubulins have been widely used as loading controls. Tubulin expression may vary according to resistance to antimicrobial and antimetabolic drugs.

## Storage

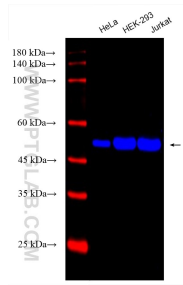
**Storage:**  
Store at -20°C. Avoid exposure to light. Stable for one year after shipment.  
**Storage Buffer:**  
PBS with 50% Glycerol, 0.05% Proclin300, 0.5% BSA, pH 7.3.  
Aliquoting is unnecessary for -20°C storage

\*\*\* 20ul sizes contain 0.1% BSA

For technical support and original validation data for this product please contact:  
T: 1 (888) 4PTGLAB (1-888-478-4522) (toll free in USA), or 1(312) 455-8498 (outside USA)  
E: proteintech@ptglab.com  
W: ptglab.com

This product is exclusively available under Proteintech Group brand and is not available to purchase from any other manufacturer.

## Selected Validation Data



Various lysates were subjected to SDS PAGE followed by western blot with CL750-66240 (Beta Tubulin antibody) at dilution of 1:4000 incubated at room temperature for 1.5 hours.