

For Research Use Only

# CoraLite® Plus 750-conjugated YY1 Monoclonal antibody

Catalog Number: CL750-66281



## Basic Information

<b>Catalog Number:</b> CL750-66281	<b>GenBank Accession Number:</b> BC037308	<b>Purification Method:</b> Protein A purification
<b>Size:</b> 100ul , Concentration: 1000 ug/ml by Nanodrop;	<b>GeneID (NCBI):</b> 7528	<b>CloneNo.:</b> 2E11C5
<b>Source:</b> Mouse	<b>UNIPROT ID:</b> P25490	<b>Recommended Dilutions:</b> WB 1:1000-1:4000
<b>Isotype:</b> IgG2a	<b>Full Name:</b> YY1 transcription factor	<b>Excitation/Emission maxima wavelengths:</b> 755 nm / 780 nm
<b>Immunogen Catalog Number:</b> AG17732	<b>Calculated MW:</b> 414 aa, 45 kDa	
	<b>Observed MW:</b> 65-70 kDa	

## Applications

<b>Tested Applications:</b> WB	<b>Positive Controls:</b> WB : NIH/3T3 cells, HepG2 cells, HUVEC cells
<b>Species Specificity:</b> human, mouse	

## Background Information

YY1, also named as DELTA, INO80S and NF-E1, contains four C2H2-type zinc fingers and belongs to the YY transcription factor family. YY1 is a multifunctional transcription factor that exhibits positive and negative control on a large number of cellular and viral genes by binding to sites overlapping the transcription start site. YY1 may direct histone deacetylases and histone acetyltransferases to a promoter in order to activate or repress the promoter, thus implicating histone modification in the YY1. The open reading frame of the human YY1 cDNA encodes a protein of 414 amino acids with a predicted molecular weight of 44 kDa. However, YY1 migrates on SDS gels as a 65-68 kDa protein, probably due to the structure of the protein. It is a ubiquitously expressed transcription factor with fundamental roles in embryogenesis, differentiation, replication and proliferation.

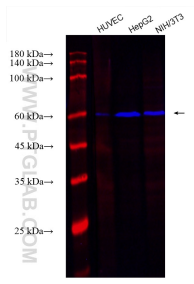
## Storage

**Storage:**  
Store at -20°C. Avoid exposure to light. Stable for one year after shipment.  
**Storage Buffer:**  
PBS with 50% Glycerol, 0.05% Proclin300, 0.5% BSA, pH 7.3.  
**Aliquoting is unnecessary for -20°C storage**

For technical support and original validation data for this product please contact:  
T: 1 (888) 4PTGLAB (1-888-478-4522) (toll free in USA), or 1(312) 455-8498 (outside USA)  
E: [proteintech@ptglab.com](mailto:proteintech@ptglab.com)  
W: [ptglab.com](http://ptglab.com)

This product is exclusively available under Proteintech Group brand and is not available to purchase from any other manufacturer.

## Selected Validation Data



Various lysates were subjected to SDS PAGE followed by western blot with CL750-66281 (YY1 antibody) at dilution of 1:2000 incubated at room temperature for 1.5 hours.