

For Research Use Only

CoraLite® Plus 750 Mouse IgG2b isotype control (11B8C4)



Catalog Number: CL750-66360-3

Basic Information

Catalog Number:
CL750-66360-3

GenBank Accession Number:
GeneID (NCBI):

Purification Method:
Protein A purification

Size:
100ug, Concentration: 0.2 mg/mL by
Nanodrop;

Full Name:

CloneNo.:
11B8C4

Source:
Mouse

Excitation/Emission maxima
wavelengths:
755 nm / 780 nm

Isotype:
IgG2b

Applications

Tested Applications:
FC

Species Specificity:
Megathura crenulata

Background Information

This antibody is used as the isotype control of mouse IgG2b. It can be used as the isotype control in Flow Cytometry, Immuno-Precipitation and other experiments. The immunogen of this antibody is Keyhole Limpet Hemocyanin (KLH).

Storage

Storage:

Store at 2-8°C. Avoid exposure to light. Stable for one year after shipment.

Storage Buffer:

PBS with 0.09% sodium azide and 0.5% BSA.

*** 20ul sizes contain 0.1% BSA

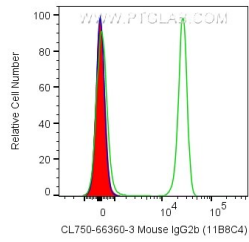
For technical support and original validation data for this product please contact:

T: 1 (888) 4PTGLAB (1-888-478-4522) (toll free
in USA), or 1(312) 455-8498 (outside USA)

E: proteintech@ptglab.com
W: ptglab.com

This product is exclusively available under Proteintech Group brand and is not available to purchase from any other manufacturer.

Selected Validation Data



1X10⁶ human PBMCs were surface stained with 0.2 ug CoraLite® Plus 750 Anti-Mouse IgG2b isotype control (CL750-66360-3, Clone:11B8C4) (red), or CoraLite® Plus 750 Anti-Human CD4 (OKT4) (green), or unstained (blue). Cells were not fixed. Lymphocytes were gated.