

For Research Use Only

# CoraLite® Plus 750-conjugated XLF Monoclonal antibody

Catalog Number: CL750-66552



## Basic Information

<b>Catalog Number:</b> CL750-66552	<b>GenBank Accession Number:</b> BC030986	<b>Purification Method:</b> Protein A purification
<b>Size:</b> 100ul , Concentration: 1000 ug/ml by Nanodrop;	<b>GeneID (NCBI):</b> 79840	<b>CloneNo.:</b> 1F8C7
<b>Source:</b> Mouse	<b>UNIPROT ID:</b> Q9H9Q4	<b>Recommended Dilutions:</b> WB 1:1000-1:4000
<b>Isotype:</b> IgG2b	<b>Full Name:</b> nonhomologous end-joining factor 1	<b>Excitation/Emission maxima wavelengths:</b> 755 nm / 780 nm
<b>Immunogen Catalog Number:</b> AG2496	<b>Calculated MW:</b> 35 kDa	
	<b>Observed MW:</b> 37 kDa	

## Applications

<b>Tested Applications:</b> WB	<b>Positive Controls:</b> WB : HeLa cells, HEK-293 cells
<b>Species Specificity:</b> Human	

## Background Information

XRCC4-like factor (XLF), also known as Cernunnos and NHEJ1, is a protein encoded by the human NHEJ1 gene and an important repair factor for DNA double-strand breaks. NHEJ is a well-known mechanism for the repair of double-strand breaks (DSBs), a lethal type of DNA damage in mammalian cells. It basically utilizes a group of enzymes to take hold of the ends of a broken DNA molecule, create a bridge between them, and subsequently re-ligate the broken DNA molecule.

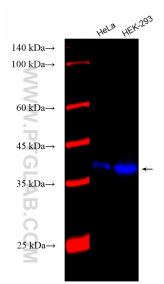
## Storage

**Storage:**  
Store at -20°C. Avoid exposure to light. Stable for one year after shipment.  
**Storage Buffer:**  
PBS with 50% Glycerol, 0.05% Proclin300, 0.5% BSA, pH 7.3.  
Aliquoting is unnecessary for -20°C storage

For technical support and original validation data for this product please contact:  
T: 1 (888) 4PTGLAB (1-888-478-4522) (toll free in USA), or 1(312) 455-8498 (outside USA)  
E: [proteintech@ptglab.com](mailto:proteintech@ptglab.com)  
W: [ptglab.com](http://ptglab.com)

This product is exclusively available under Proteintech Group brand and is not available to purchase from any other manufacturer.

## Selected Validation Data



Various lysates were subjected to SDS PAGE followed by western blot with CL750-66552 (XLF antibody) at dilution of 1:2000 incubated at room temperature for 1.5 hours.