

For Research Use Only

CoraLite® Plus 750-conjugated SMAD1 Monoclonal antibody

Catalog Number: CL750-66559



Basic Information

Catalog Number: CL750-66559	GenBank Accession Number: BC001878	Purification Method: Protein G purification
Size: 100ul , Concentration: 1000 ug/ml by Nanodrop;	GeneID (NCBI): 4086	CloneNo.: 2D10B8
Source: Mouse	UNIPROT ID: Q15797	Recommended Dilutions: WB 1:500-1:2000
Isotype: IgG1	Full Name: SMAD family member 1	Excitation/Emission maxima wavelengths: 755 nm / 780 nm
Immunogen Catalog Number: AG0701	Calculated MW: 52 kDa	
	Observed MW: 52 kDa	

Applications

Tested Applications: WB	Positive Controls: WB : HSC-T6 cells,
Species Specificity: human, mouse, rat	

Background Information

Transforming growth factor- β (TGF- β) superfamily is recognized as one of the largest families of secreted multifunctional peptides exerting different biological effects on a large variety of cell types, such as regulation of hormone secretion, stimulation of extracellular matrix formation, the inhibition of proliferation of many cell types, cell survival, bone formation, and chemotaxis for inflammatory cells. One of the most important proteins that modulate TGF- β ligand activity is the SMAD family proteins. SMAD1 is one of the receptor-activated Smads. It's also a signal transducers of BMP signaling and binds to several proteins involved in ubiquitin-proteasome system (UPS). Transcriptional modulator activated by BMP (bone morphogenetic proteins) type 1 receptor kinase

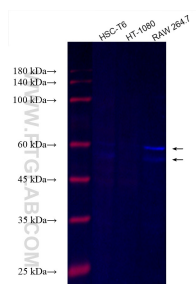
Storage

Storage:
Store at -20°C. Avoid exposure to light. Stable for one year after shipment.
Storage Buffer:
PBS with 50% Glycerol, 0.05% Proclin300, 0.5% BSA, pH 7.3.
Aliquoting is unnecessary for -20°C storage

For technical support and original validation data for this product please contact:
T: 1 (888) 4PTGLAB (1-888-478-4522) (toll free in USA), or 1(312) 455-8498 (outside USA)
E: proteintech@ptglab.com
W: ptglab.com

This product is exclusively available under Proteintech Group brand and is not available to purchase from any other manufacturer.

Selected Validation Data



HSC-T6 cells were subjected to SDS PAGE followed by western blot with CL750-66559 (SMAD1 antibody) at dilution of 1:1000 incubated at room temperature for 1.5 hours.