

For Research Use Only

# CoraLite® Plus 750-conjugated KAT2A/GCN5 Monoclonal antibody

Catalog Number:CL750-66575

Featured Product



## Basic Information

Catalog Number:

CL750-66575

Size:

100ul , Concentration: 1000 ug/ml by  
Nanodrop;

Source:

Mouse

Isotype:

IgG2a

Immunogen Catalog Number:

AG6940

GenBank Accession Number:

BC032743

GeneID (NCBI):

2648

UNIPROT ID:

Q92830

Full Name:

K(lysine) acetyltransferase 2A

Calculated MW:

94 kDa

Observed MW:

94 kDa

Purification Method:

Protein A purification

CloneNo.:

1F6G7

Recommended Dilutions:

WB 1:500-1:1000

Excitation/Emission maxima  
wavelengths:

755 nm / 780 nm

## Applications

Tested Applications:

WB

Species Specificity:

Human, mouse, rat

Positive Controls:

WB : HeLa cells, NIH/3T3 cells

## Background Information

GCN5, encoded by KAT2A, is a member of nuclear A-type histone acetyltransferase (HAT) which has direct impact on gene transcription. Additionally, GCN5 has roles in cell cycle regulation, DNA replication, and DNA repair, highlighting it as key player in the maintenance of genome stability. GCN5 is a coactivator of c-MYC oncogene protein and has oncogenic roles in various cancers.

## Storage

Storage:

Store at -20°C. Avoid exposure to light. Stable for one year after shipment.

Storage Buffer:

PBS with 50% Glycerol, 0.05% Proclin300, 0.5% BSA, pH 7.3.

Aliquoting is unnecessary for -20°C storage

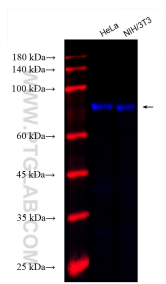
For technical support and original validation data for this product please contact:

T: 1 (888) 4PTGLAB (1-888-478-4522) (toll free  
in USA), or 1(312) 455-8498 (outside USA)

E: [proteintech@ptglab.com](mailto:proteintech@ptglab.com)  
W: [ptglab.com](http://ptglab.com)

This product is exclusively available under Proteintech Group brand and is not available to purchase from any other manufacturer.

## Selected Validation Data



Various lysates were subjected to SDS PAGE followed by western blot with CL750-66575 (KAT2A/GCN5 antibody) at dilution of 1:800 incubated at room temperature for 1.5 hours.