

For Research Use Only

# CoraLite® Plus 750-conjugated c-Cbl Monoclonal antibody

Catalog Number: CL750-66576

Featured Product



## Basic Information

Catalog Number:

CL750-66576

Size:

100ul , Concentration: 1000 ug/ml by Nanodrop;

Source:

Mouse

Isotype:

IgG1

Immunogen Catalog Number:

AG23033

GenBank Accession Number:

BC132733

GeneID (NCBI):

867

UNIPROT ID:

P22681

Full Name:

Cas-Br-M (murine) ecotropic retroviral transforming sequence

Calculated MW:

906 aa, 100 kDa

Observed MW:

100-120 kDa

Purification Method:

Protein A purification

CloneNo.:

2F6D1

Recommended Dilutions:

WB 1:1000-1:4000

Excitation/Emission maxima

wavelengths:

755 nm / 780 nm

## Applications

Tested Applications:

WB

Species Specificity:

Human, mouse

Positive Controls:

WB : Raji cells, mouse brain tissue, A431 cells

## Background Information

c-Cbl (Casitas B-lineage lymphoma) is a critical regulator that controls immature or follicular helper T cell development, B cell development, immune tolerance, angiogenesis, or tumorigenesis (PMID: 33962939). c-Cbl also plays a pivotal role in regulating dendritic cell (DC) function via negatively modulating IL-12 production after Toll-like receptor (TLR) stimulation (PMID: 21799517).

## Storage

Storage:

Store at -20°C. Avoid exposure to light. Stable for one year after shipment.

Storage Buffer:

PBS with 50% Glycerol, 0.05% Proclin300, 0.5% BSA, pH 7.3.

Aliquoting is unnecessary for -20°C storage

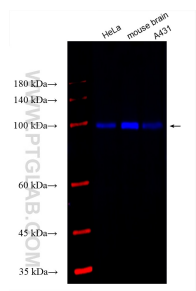
For technical support and original validation data for this product please contact:

T: 1 (888) 4PTGLAB (1-888-478-4522) (toll free in USA), or 1(312) 455-8498 (outside USA)

E: [proteintech@ptglab.com](mailto:proteintech@ptglab.com)  
W: [ptglab.com](http://ptglab.com)

This product is exclusively available under Proteintech Group brand and is not available to purchase from any other manufacturer.

# Selected Validation Data



Various lysates were subjected to SDS PAGE followed by western blot with CL750-66576 (c-Cbl antibody) at dilution of 1:2000 incubated at room temperature for 1.5 hours.