

For Research Use Only

CoraLite® Plus 750-conjugated Talin-1 Monoclonal antibody



Catalog Number: CL750-67992

Basic Information

Catalog Number: CL750-67992	GenBank Accession Number: BC042923	Purification Method: Protein G purification
Size: 100ul , Concentration: 1000 µg/ml by Nanodrop;	GeneID (NCBI): 7094	CloneNo.: 2E12D10
Source: Mouse	Full Name: talin 1	Excitation/Emission maxima wavelengths: 755 nm / 780 nm
Isotype: IgG1	Calculated MW: 2541 aa, 270 kDa	
Immunogen Catalog Number: AG5937	Observed MW: 270 kDa	

Applications

Tested Applications:
FC (Intra)

Species Specificity:
Human

Background Information

Talin-1 is a large cytoskeletal protein consisting of a globular head domain and a long rod comprised of a series of α -helical bundles (PMID: 35266014). Talin-1 is ubiquitously expressed and is a major component of focal adhesions which are multi-protein, integrin-containing complexes, mediating cell migration, adhesion and integrin signalling (PMID: 33431906). Talin-1 also plays a role in tumor formation, migration and metastasis in various malignancies (PMID: 37013489).

Storage

Storage:
Store at -20°C. Avoid exposure to light. Stable for one year after shipment.

Storage Buffer:
PBS with 50% Glycerol, 0.05% Proclin300, 0.5% BSA, pH 7.3.

Aliquoting is unnecessary for -20°C storage

*** 20ul sizes contain 0.1% BSA

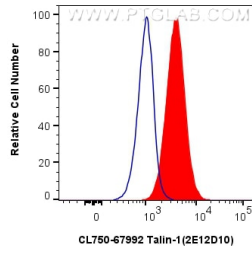
For technical support and original validation data for this product please contact:

T: 1 (888) 4PTGLAB (1-888-478-4522) (toll free
in USA), or 1(312) 455-8498 (outside USA)

E: proteintech@ptglab.com
W: ptglab.com

This product is exclusively available under Proteintech Group brand and is not available to purchase from any other manufacturer.

Selected Validation Data



1x10⁶ HeLa cells were intracellularly stained with 0.8 ug CoraLite® Plus 750 Anti-Human Talin-1 (CL750-67992, Clone:2E12D10) (red), or 0.8 ug CoraLite® Plus 750 Mouse IgG1 Isotype Control (MOPC-21) (CL750-65124, Clone: MOPC-21) (blue). Cells were fixed with 4% PFA and permeabilized with Flow Cytometry Perm Buffer (PF00011-C).