

For Research Use Only

# CoraLite® Plus 750-conjugated Beta Tubulin Recombinant antibody



Catalog Number:CL750-80713

## Basic Information

<b>Catalog Number:</b> CL750-80713	<b>GenBank Accession Number:</b> BC000748	<b>Purification Method:</b> Protein A purification
<b>Size:</b> 100ul , Concentration: 1000 µg/ml by Nanodrop;	<b>GeneID (NCBI):</b> 10381	<b>CloneNo.:</b> 2013
<b>Source:</b> Rabbit	<b>Full Name:</b> tubulin, beta 3	<b>Recommended Dilutions:</b> WB 1:1000-1:8000
<b>Isotype:</b> IgG	<b>Calculated MW:</b> 450 aa, 50 kDa	<b>Excitation/Emission maxima wavelengths:</b> 755 nm / 780 nm
<b>Immunogen Catalog Number:</b> AG0117	<b>Observed MW:</b> 50-55 kDa	

## Applications

**Tested Applications:**  
WB

**Species Specificity:**  
Human, mouse, rat, zebrafish

**Positive Controls:**  
WB : Jurkat cells, NIH/3T3 cells

## Background Information

### Storage

**Storage:**  
Store at -20°C. Avoid exposure to light. Stable for one year after shipment.

**Storage Buffer:**  
PBS with 50% Glycerol, 0.05% Proclin300, 0.5% BSA, pH 7.3.

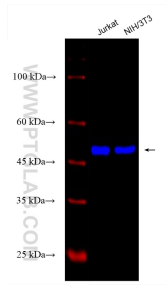
Aliquoting is unnecessary for -20°C storage

\*\*\* 20ul sizes contain 0.1% BSA

For technical support and original validation data for this product please contact:  
T: 1 (888) 4PTGLAB (1-888-478-4522) (toll free in USA), or 1(312) 455-8498 (outside USA)      E: proteintech@ptglab.com  
W: ptglab.com

This product is exclusively available under Proteintech Group brand and is not available to purchase from any other manufacturer.

## Selected Validation Data



Various lysates were subjected to SDS PAGE followed by western blot with CL750-80713 (Beta Tubulin antibody) at dilution of 1:4000 incubated at room temperature for 1.5 hours.