

For Research Use Only

# CoraLite® Plus 750-conjugated Phospho-CHEK2 (Thr68) Recombinant antibody

Catalog Number: CL750-81740



## Basic Information

<b>Catalog Number:</b> CL750-81740	<b>GenBank Accession Number:</b> BC004207	<b>Purification Method:</b> Protein A purification
<b>Size:</b> 100ul , Concentration: 1000 ug/ml by Nanodrop;	<b>GeneID (NCBI):</b> 11200	<b>CloneNo.:</b> 1L2
<b>Source:</b> Rabbit	<b>UNIPROT ID:</b> O96017	<b>Recommended Dilutions:</b> WB 1:1000-1:4000
<b>Isotype:</b> IgG	<b>Full Name:</b> CHK2 checkpoint homolog (S. pombe)	<b>Excitation/Emission maxima wavelengths:</b> 755 nm / 780 nm
	<b>Calculated MW:</b> 61 kDa	
	<b>Observed MW:</b> 65 kDa	

## Applications

<b>Tested Applications:</b> WB	<b>Positive Controls:</b> WB : MMS treated PC-3 cells,
<b>Species Specificity:</b> human	

## Background Information

Serine/threonine-protein kinase Chk2 (CHEK2) is a serine/threonine kinase which is activated upon DNA damage and is implicated in pathways that govern DNA repair, cell cycle arrest or apoptosis in response to the initial damage. ATM phosphorylates CHEK2 on T68. Phosphorylation on T68 and subsequent full activation of CHEK2 was shown to require priming phosphorylation on adjacent residues by Polo-like kinase 3 (PLK3) and the dual specificity tyrosine and serine/threonine kinase TTK/hMPS1. Additionally TTK appears to phosphorylate T68. Phosphorylation of T68 promotes the binding of the N-terminal SQ/TQ-rich cluster of one CHEK2 molecule with the FHA domain of another CHEK2 molecule. (PMID: 28553140, PMID: 18004398, PMID: 33322746)

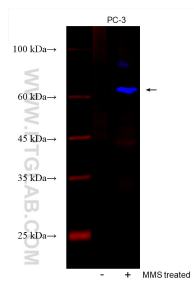
## Storage

**Storage:**  
Store at -20°C. Avoid exposure to light. Stable for one year after shipment.  
**Storage Buffer:**  
PBS with 50% Glycerol, 0.05% Proclin300, 0.5% BSA, pH 7.3.  
**Aliquoting is unnecessary for -20°C storage**

For technical support and original validation data for this product please contact:  
T: 1 (888) 4PTGLAB (1-888-478-4522) (toll free in USA), or 1(312) 455-8498 (outside USA)  
E: [proteintech@ptglab.com](mailto:proteintech@ptglab.com)  
W: [ptglab.com](http://ptglab.com)

This product is exclusively available under Proteintech Group brand and is not available to purchase from any other manufacturer.

## Selected Validation Data



Various lysates were subjected to SDS PAGE followed by western blot with CL750-81740 (Phospho-CHEK2 (Thr68) antibody) at dilution of 1:2000 incubated at room temperature for 1.5 hours.