

For Research Use Only

CoraLite® Plus 750-conjugated ATG5 Recombinant antibody

Catalog Number: CL750-81803

Featured Product



Basic Information

Catalog Number:

CL750-81803

Size:

100ul , Concentration: 1000 ug/ml by Nanodrop;

Source:

Rabbit

Isotype:

IgG

Immunogen Catalog Number:

AG0214

GenBank Accession Number:

BC002699

GeneID (NCBI):

9474

UNIPROT ID:

Q9H1Y0

Full Name:

ATG5 autophagy related 5 homolog (S. cerevisiae)

Calculated MW:

32 kDa

Observed MW:

50-55 kDa

Purification Method:

Protein A purification

CloneNo.:

5M5

Recommended Dilutions:

WB 1:500-1:2000

Excitation/Emission maxima wavelengths:

755 nm / 780 nm

Applications

Tested Applications:

WB

Species Specificity:

human, mouse, rat

Positive Controls:

WB : Jurkat cells,

Background Information

ATG5, also named as APG5L and ASP, belongs to the ATG5 family. It is required for autophagy. It plays an important role in the apoptotic process, possibly within the modified cytoskeleton. Its expression is a relatively late event in the apoptotic process, occurring downstream of caspase activity. Autophagy is a catabolic process for the autophagosomic-lysosomal degradation of bulk cytoplasmic contents. Formation of the autophagosome involves a ubiquitin-like conjugation system in which Atg12 is covalently bound to Atg5 and targeted to autophagosome vesicles. It mediates autophagosome-independent host protection. This antibody is raised against 28-275 amino acids of human ATG5. It can recognize the ATG5-ATG12 complex (55 kDa) which can be truncated and generate a 40-45 kDa band.

Storage

Storage:

Store at -20°C. Avoid exposure to light. Stable for one year after shipment.

Storage Buffer:

PBS with 50% Glycerol, 0.05% Proclin300, 0.5% BSA, pH 7.3.

Aliquoting is unnecessary for -20°C storage

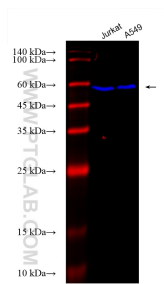
For technical support and original validation data for this product please contact:

T: 1 (888) 4PTGLAB (1-888-478-4522) (toll free in USA), or 1(312) 455-8498 (outside USA)

E: proteintech@ptglab.com
W: ptglab.com

This product is exclusively available under Proteintech Group brand and is not available to purchase from any other manufacturer.

Selected Validation Data



Various lysates were subjected to SDS PAGE followed by western blot with CL750-81803 (ATG5 antibody) at dilution of 1:1000 incubated at room temperature for 1.5 hours.