

For Research Use Only

# CoraLite® Plus 750-conjugated KIF15 Recombinant antibody

Catalog Number: CL750-82903



## Basic Information

<b>Catalog Number:</b> CL750-82903	<b>GenBank Accession Number:</b> NM_020242	<b>Purification Method:</b> Protein A purification
<b>Size:</b> 100ul , Concentration: 1000 ug/ml by Nanodrop;	<b>GeneID (NCBI):</b> 56992	<b>CloneNo.:</b> 230049F1
<b>Source:</b> Rabbit	<b>UNIPROT ID:</b> Q9NS87	<b>Recommended Dilutions:</b> WB 1:500-1:2000
<b>Isotype:</b> IgG	<b>Full Name:</b> kinesin family member 15	<b>Excitation/Emission maxima wavelengths:</b> 755 nm / 780 nm
<b>Immunogen Catalog Number:</b> AG33897	<b>Calculated MW:</b> 160 kDa	
	<b>Observed MW:</b> 160 kDa	

## Applications

<b>Tested Applications:</b> WB	<b>Positive Controls:</b> WB : HeLa cells, HepG2 cells, K-562 cells
<b>Species Specificity:</b> human	

## Background Information

KIF15, also named as KLP2 and KNSL7, belongs to the kinesin-like protein family and KLP2 subfamily. It is a plus-end directed kinesin-like motor enzyme which involved in mitotic spindle assembly. Several isoforms of KIF15 exist due to the alternative splicing, with molecular weight between 130-160 kDa. Sometimes higher molecular weight around 200 kDa can also be observed, which may be a modified variant of KIF15. (14618103)

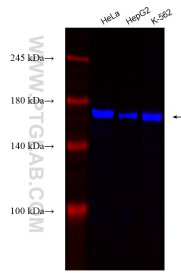
## Storage

**Storage:**  
Store at -20°C. Avoid exposure to light. Stable for one year after shipment.  
**Storage Buffer:**  
PBS with 50% Glycerol, 0.05% Proclin300, 0.5% BSA, pH 7.3.  
**Aliquoting is unnecessary for -20°C storage**

For technical support and original validation data for this product please contact:  
T: 1 (888) 4PTGLAB (1-888-478-4522) (toll free in USA), or 1(312) 455-8498 (outside USA)  
E: [proteintech@ptglab.com](mailto:proteintech@ptglab.com)  
W: [ptglab.com](http://ptglab.com)

This product is exclusively available under Proteintech Group brand and is not available to purchase from any other manufacturer.

## Selected Validation Data



Various lysates were subjected to SDS PAGE followed by western blot with CL750-82903 (KIF15 antibody) at dilution of 1:1000 incubated at room temperature for 1.5 hours.