

For Research Use Only

CoraLite® Plus 750-conjugated HEBP1 Recombinant antibody

Catalog Number: CL750-82950

Featured Product



Basic Information

Catalog Number:

CL750-82950

Size:

100ul , Concentration: 1000 ug/ml by Nanodrop;

Source:

Rabbit

Isotype:

IgG

Immunogen Catalog Number:

AG10538

GenBank Accession Number:

BC016277

GeneID (NCBI):

50865

UNIPROT ID:

Q9NRV9

Full Name:

heme binding protein 1

Calculated MW:

189 aa, 21 kDa

Observed MW:

21 kDa

Purification Method:

Protein A purification

CloneNo.:

230156B6

Recommended Dilutions:

WB 1:500-1:2000

Excitation/Emission maxima wavelengths:

755 nm / 780 nm

Applications

Tested Applications:

WB

Species Specificity:

human, mouse, rat

Positive Controls:

WB : HeLa cells, HepG2 cells, L02 cells

Storage

Storage:

Store at -20°C. Avoid exposure to light. Stable for one year after shipment.

Storage Buffer:

PBS with 50% Glycerol, 0.05% Proclin300, 0.5% BSA, pH 7.3.

Aliquoting is unnecessary for -20°C storage

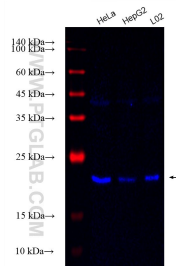
For technical support and original validation data for this product please contact:

T: 1 (888) 4PTGLAB (1-888-478-4522) (toll free in USA), or 1(312) 455-8498 (outside USA)

E: proteintech@ptglab.com
W: ptglab.com

This product is exclusively available under Proteintech Group brand and is not available to purchase from any other manufacturer.

Selected Validation Data



Various lysates were subjected to SDS PAGE followed by western blot with CL750-82950 (HEBP1 antibody) at dilution of 1:1000 incubated at room temperature for 1.5 hours.