

For Research Use Only

# CoraLite® Plus 750-conjugated CD226 Recombinant antibody

Catalog Number: CL750-82991-3



## Basic Information

Catalog Number:

CL750-82991-3

Size:

100ul , Concentration: 1000 ug/ml by  
Nanodrop;

Source:

Rabbit

Isotype:

IgG

GenBank Accession Number:

BC074787

GeneID (NCBI):

10666

ENSEMBL Gene ID:

ENSG00000150637

UNIPROT ID:

Q15762

Full Name:

CD226 molecule

Calculated MW:

336 aa, 39 kDa

Observed MW:

65 kDa

Purification Method:

Protein A purification

CloneNo.:

230041E12

Recommended Dilutions:

WB 1:500-1:1000

Excitation/Emission maxima  
wavelengths:

755 nm / 780 nm

## Applications

Tested Applications:

WB

Species Specificity:

Human

Positive Controls:

WB : human peripheral blood platelets,

## Background Information

CD226 (DNAM-1) is a ~65 kDa glycoprotein expressed on the surface of NK cells, platelets, monocytes and a subset of T cells. It is a member of the Ig-superfamily containing 2 Ig-like domains of the V-set. CD226 mediates cellular adhesion of platelets and megakaryocytic cells to vascular endothelial cells. The protein also plays a role in megakaryocytic cell maturation. Interactions of CD226 and its ligands, CD155 and CD112, induce NK and T cell-mediated cytotoxicity and cytokine secretion (PMID: 15039383).

## Storage

Storage:

Store at -20°C. Avoid exposure to light. Stable for one year after shipment.

Storage Buffer:

PBS with 50% Glycerol, 0.05% Proclin300, 0.5% BSA, pH 7.3.

Aliquoting is unnecessary for -20°C storage

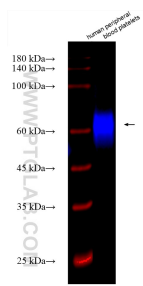
For technical support and original validation data for this product please contact:

T: 1 (888) 4PTGLAB (1-888-478-4522) (toll free  
in USA), or 1(312) 455-8498 (outside USA)

E: [proteintech@ptglab.com](mailto:proteintech@ptglab.com)  
W: [ptglab.com](http://ptglab.com)

This product is exclusively available under Proteintech Group brand and is not available to purchase from any other manufacturer.

## Selected Validation Data



Human peripheral blood platelets were subjected to SDS PAGE followed by western blot with CL750-82991-3 (CD226 antibody) at dilution of 1:800 incubated at room temperature for 1.5 hours.