

For Research Use Only

CoraLite® Plus 750-conjugated RILP Recombinant antibody

Catalog Number: CL750-82996-4



Basic Information

Catalog Number:

CL750-82996-4

Size:

100ul , Concentration: 1000 ug/ml by Nanodrop;

Source:

Rabbit

Isotype:

IgG

Immunogen Catalog Number:

AG4472

GenBank Accession Number:

BC031621

GeneID (NCBI):

83547

UNIPROT ID:

Q96NA2

Full Name:

Rab interacting lysosomal protein

Calculated MW:

401 aa, 41 kDa

Observed MW:

50 kDa

Purification Method:

Protein A purification

CloneNo.:

230208G2

Recommended Dilutions:

WB 1:500-1:1000

Excitation/Emission maxima wavelengths:

755 nm / 780 nm

Applications

Tested Applications:

WB

Species Specificity:

human

Positive Controls:

WB : HeLa cells, HepG2 cells

Storage

Storage:

Store at -20°C. Avoid exposure to light. Stable for one year after shipment.

Storage Buffer:

PBS with 50% Glycerol, 0.05% Proclin300, 0.5% BSA, pH 7.3.

Aliquoting is unnecessary for -20°C storage

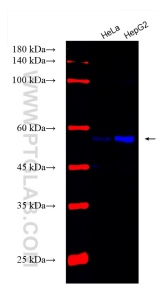
For technical support and original validation data for this product please contact:

T: 1 (888) 4PTGLAB (1-888-478-4522) (toll free in USA), or 1(312) 455-8498 (outside USA)

E: proteintech@ptglab.com
W: ptglab.com

This product is exclusively available under Proteintech Group brand and is not available to purchase from any other manufacturer.

Selected Validation Data



Various lysates were subjected to SDS PAGE followed by western blot with CL750-82996-4 (RILP antibody) at dilution of 1:500 incubated at room temperature for 1.5 hours.