

For Research Use Only

# CoraLite® Plus 750-conjugated MTA3 Recombinant antibody

Catalog Number: CL750-83042-3



## Basic Information

### Catalog Number:

CL750-83042-3

### Size:

100ul , Concentration: 1000 ug/ml by  
Nanodrop;

### Source:

Rabbit

### Isotype:

IgG

### Immunogen Catalog Number:

AG6400

### GenBank Accession Number:

BC053631

### GeneID (NCBI):

57504

### UNIPROT ID:

Q9BTC8

### Full Name:

metastasis associated 1 family,  
member 3

### Calculated MW:

68 kDa

### Observed MW:

62 kDa, 68 kDa

### Purification Method:

Protein A purification

### CloneNo.:

230350D12

### Recommended Dilutions:

WB 1:1000-1:8000

### Excitation/Emission maxima wavelengths:

755 nm / 780 nm

## Applications

### Tested Applications:

WB, FC (Intra)

### Species Specificity:

human, mouse

### Positive Controls:

WB : MCF-7 cells, Raji cells

## Background Information

The metastasis-associated (MTA) family contains three members, MTA1, MTA2 and MTA3 (PMID:12167865). Metastasis-associated protein 3 (MTA3) is a cell-type specific component of the Mi-2-NURD transcriptional co-repressor complex. It has a role in maintenance of the normal epithelial architecture through the repression of SNAI1 transcription in a histone deacetylase-dependent manner, and thus the regulation of E-cadherin levels.

## Storage

### Storage:

Store at -20°C. Avoid exposure to light. Stable for one year after shipment.

### Storage Buffer:

PBS with 50% Glycerol, 0.05% Proclin300, 0.5% BSA, pH 7.3.

Aliquoting is unnecessary for -20°C storage

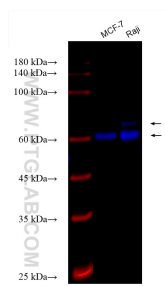
For technical support and original validation data for this product please contact:

T: 1 (888) 4PTGLAB (1-888-478-4522) (toll free  
in USA), or 1(312) 455-8498 (outside USA)

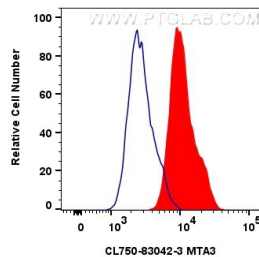
E: [proteintech@ptglab.com](mailto:proteintech@ptglab.com)  
W: [ptglab.com](http://ptglab.com)

This product is exclusively available under Proteintech Group brand and is not available to purchase from any other manufacturer.

## Selected Validation Data



Various lysates were subjected to SDS PAGE followed by western blot with CL750-83042-3 (MTA3 antibody) at dilution of 1:4000 incubated at room temperature for 1.5 hours.



$1 \times 10^6$  U-251 cells were intracellularly stained with 0.8  $\mu$ g Coralite® Plus 750 Mta3 Recombinant Antibody (CL750-83042-3, Clone:230350D12)(red), or 0.8  $\mu$ g Isotype Control (blue). Cells were fixed and permeabilized with Transcription Factor Staining Buffer Kit (PF00011).