

For Research Use Only

CoraLite® Plus 750-conjugated SHBG Recombinant antibody

Catalog Number:CL750-83096



Basic Information

Catalog Number:

CL750-83096

Size:

100ul , Concentration: 1000 ug/ml by
Nanodrop;

Source:

Rabbit

Isotype:

IgG

GenBank Accession Number:

BC101785

GeneID (NCBI):

6462

UNIPROT ID:

P04278

Full Name:

sex hormone-binding globulin

Calculated MW:

402 aa, 44 kDa

Observed MW:

40-50 kDa

Purification Method:

Protein A purification

CloneNo.:

230356F10

Recommended Dilutions:

WB 1:500-1:1000

Excitation/Emission maxima
wavelengths:

755 nm / 780 nm

Applications

Tested Applications:

WB

Species Specificity:

Human

Positive Controls:

WB : human plasma,

Background Information

SHBG (sex hormone-binding globulin), also known as androgen-binding protein (ABP), is the specific transport protein for sex steroid hormones in humans. SHBG is synthesized mainly by the liver and circulates in the blood, in form of homodimer with a single steroid-binding site per dimer. In addition to the plasma SHBG, a testis isoform expressed by Sertoli cells also exists due to the gene alternative splicing. Various bands (44-56 kDa) recognized by this antibody may represent variably glycosylated or different isoforms of SHBG.

Storage

Storage:

Store at -20°C. Avoid exposure to light. Stable for one year after shipment.

Storage Buffer:

PBS with 50% Glycerol, 0.05% Proclin300, 0.5% BSA, pH 7.3.

Aliquoting is unnecessary for -20°C storage

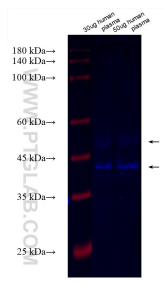
For technical support and original validation data for this product please contact:

T: 1 (888) 4PTGLAB (1-888-478-4522) (toll free
in USA), or 1(312) 455-8498 (outside USA)

E: proteintech@ptglab.com
W: ptglab.com

This product is exclusively available under Proteintech
Group brand and is not available to purchase from any
other manufacturer.

Selected Validation Data



Various lysates were subjected to SDS PAGE followed by western blot with CL750-83096 (SHBG antibody) at dilution of 1:500 incubated at room temperature for 1.5 hours.