

For Research Use Only

CoraLite® Plus 750-conjugated IFI35 Recombinant antibody

Catalog Number: CL750-83160-4



Basic Information

Catalog Number: CL750-83160-4	GenBank Accession Number: BC001356	Purification Method: Protein A purification
Size: 100ul , Concentration: 1000 ug/ml by Nanodrop;	GeneID (NCBI): 3430	CloneNo.: 240063E1
Source: Rabbit	UNIPROT ID: P80217	Recommended Dilutions: WB 1:1000-1:4000
Isotype: IgG	Full Name: interferon-induced protein 35	Excitation/Emission maxima wavelengths: 755 nm / 780 nm
Immunogen Catalog Number: AG34653	Calculated MW: 31 kDa	
	Observed MW: 31-35 kDa	

Applications

Tested Applications: WB	Positive Controls: WB : Jurkat cells, A549 cells, HeLa cells
Species Specificity: Human	

Background Information

IFI35 (interferon induced protein 35), also known as IFP35. It is expected to be located in cytoplasm, nucleus and extracellular space. The protein is expressed in a wide range of cell types, including fibroblasts, macrophages, and epithelial cells. Involved in several processes, including macrophage activation involved in immune response; positive regulation of defense response; and regulation of signal transduction. And the calculated molecular weight of IFI35 is 31 kDa.

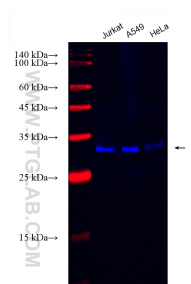
Storage

Storage:
Store at -20°C. Avoid exposure to light. Stable for one year after shipment.
Storage Buffer:
PBS with 50% Glycerol, 0.05% Proclin300, 0.5% BSA, pH 7.3.
Aliquoting is unnecessary for -20°C storage

For technical support and original validation data for this product please contact:
T: 1 (888) 4PTGLAB (1-888-478-4522) (toll free in USA), or 1(312) 455-8498 (outside USA)
E: proteintech@ptglab.com
W: ptglab.com

This product is exclusively available under Proteintech Group brand and is not available to purchase from any other manufacturer.

Selected Validation Data



Various lysates were subjected to SDS PAGE followed by western blot with CL750-83160-4 (IFI35 antibody) at dilution of 1:2000 incubated at room temperature for 1.5 hours.