

For Research Use Only

CoraLite® Plus 750-conjugated SLC6A12 Recombinant antibody

Catalog Number: CL750-83195-5



Basic Information

Catalog Number:

CL750-83195-5

Size:

100ul , Concentration: 1000 ug/ml by
Nanodrop;

Source:

Rabbit

Isotype:

IgG

Immunogen Catalog Number:

AG18778

GenBank Accession Number:

BC126215

GeneID (NCBI):

6539

UNIPROT ID:

P48065

Full Name:

solute carrier family 6
(neurotransmitter transporter,
betaine/GABA), member 12

Calculated MW:

614 aa, 69 kDa

Observed MW:

69 kDa

Purification Method:

Protein A purification

CloneNo.:

240021C10

Recommended Dilutions:

WB 1:1000-1:4000

Excitation/Emission maxima wavelengths:

755 nm / 780 nm

Applications

Tested Applications:

WB

Species Specificity:

Human

Positive Controls:

WB : HepG2 cells, HuH-7 cells

Storage

Storage:

Store at -20°C. Avoid exposure to light. Stable for one year after shipment.

Storage Buffer:

PBS with 50% Glycerol, 0.05% Proclin300, 0.5% BSA, pH 7.3.

Aliquoting is unnecessary for -20°C storage

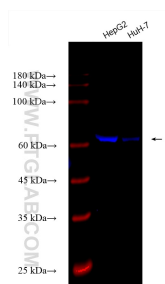
For technical support and original validation data for this product please contact:

T: 1 (888) 4PTGLAB (1-888-478-4522) (toll free
in USA), or 1(312) 455-8498 (outside USA)

E: proteintech@ptglab.com
W: ptglab.com

This product is exclusively available under Proteintech
Group brand and is not available to purchase from any
other manufacturer.

Selected Validation Data



Various lysates were subjected to SDS PAGE followed by western blot with CL750-83195-5 (SLC6A12 antibody) at dilution of 1:2000 incubated at room temperature for 1.5 hours.