

For Research Use Only

CoraLite® Plus 750-conjugated Shh Recombinant antibody

Catalog Number:CL750-83280



Basic Information

Catalog Number:

CL750-83280

Size:

100ul , Concentration: 1000 ug/ml by

Nanodrop;

Source:

Rabbit

Isotype:

IgG

GenBank Accession Number:

NM_009170.3

GeneID (NCBI):

20423

UNIPROT ID:

Q62226

Full Name:

sonic hedgehog

Calculated MW:

48KD

Observed MW:

19-50 kDa

Purification Method:

Protein A purification

CloneNo.:

240057E7

Recommended Dilutions:

WB 1:500-1:1000

Excitation/Emission maxima

wavelengths:

755 nm / 780 nm

Applications

Tested Applications:

WB

Species Specificity:

mouse, rat

Positive Controls:

WB : mouse liver tissue, rat liver tissue

Storage

Storage:

Store at -20°C. Avoid exposure to light. Stable for one year after shipment.

Storage Buffer:

PBS with 50% Glycerol, 0.05% Proclin300, 0.5% BSA, pH 7.3.

Aliquoting is unnecessary for -20°C storage

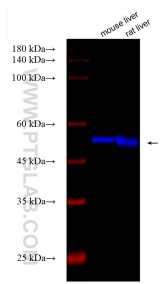
For technical support and original validation data for this product please contact:

T: 1 (888) 4PTGLAB (1-888-478-4522) (toll free
in USA), or 1(312) 455-8498 (outside USA)

E: proteintech@ptglab.com
W: ptglab.com

This product is exclusively available under Proteintech Group brand and is not available to purchase from any other manufacturer.

Selected Validation Data



Various lysates were subjected to SDS PAGE followed by western blot with CL750-83280 (Shh antibody) at dilution of 1:800 incubated at room temperature for 1.5 hours.