

For Research Use Only

CoraLite® Plus 750-conjugated EPCAM/CD326 Recombinant monoclonal antibody

Catalog Number: CL750-84073-6



Basic Information

Catalog Number: CL750-84073-6	GenBank Accession Number: NM_002354.3	Purification Method: Protein A purification
Size: 100ul , Concentration: 1000 ug/ml by Nanodrop;	GeneID (NCBI): 4072	CloneNo.: 241243B10
Source: Rabbit	UNIPROT ID: P16422	Recommended Dilutions: IF/ICC: 1:50-1:500
Isotype: IgG	Full Name: epithelial cell adhesion molecule	Excitation/Emission maxima wavelengths: 755 nm / 780 nm
Immunogen Catalog Number: EG1370	Calculated MW: 35 kDa	
	Observed MW: 35-40 kDa	

Applications

Tested Applications: IF/ICC	Positive Controls: IF/ICC : MCF-7 cells,
Species Specificity: human	

Background Information

Epithelial cell adhesion molecule (EpCAM, CD326) is a type I transmembrane glycoprotein that functions as a homophilic, epithelial-specific intercellular cell-adhesion molecule. In addition to cell adhesion, EpCAM is also involved in cellular signaling, cell migration, proliferation, and differentiation. EpCAM is highly expressed on most carcinomas and therefore of potential use as a diagnostic and prognostic marker for a variety of carcinomas, and has become a therapeutic target. EpCAM may occur in distinct forms due to glycosylation. (PMID: 20837599; 19249674; 21576002; 22647938; 12691820)

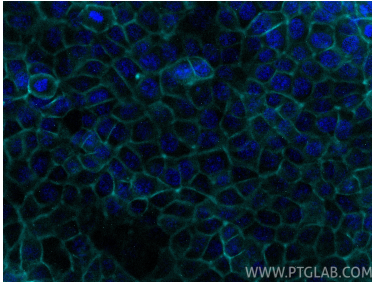
Storage

Storage:
Store at -20°C. Avoid exposure to light. Stable for one year after shipment.
Storage Buffer:
PBS with 50% glycerol, 0.05% Proclin300, 0.5% BSA, pH7.3
Aliquoting is unnecessary for -20°C storage

For technical support and original validation data for this product please contact:
T: 1 (888) 4PTGLAB (1-888-478-4522) (toll free in USA), or 1(312) 455-8498 (outside USA)
E: proteintech@ptglab.com
W: ptglab.com

This product is exclusively available under Proteintech Group brand and is not available to purchase from any other manufacturer.

Selected Validation Data



Immunofluorescent analysis of (-20°C Methanol)
fixed MCF-7 cells using CoraLite® Plus 750
EPCAM/CD326 antibody (CL750-84073-6, Clone:
241243B10) at dilution of 1:200.