

For Research Use Only



# CoraLite® Plus 750 Anti-Mouse VEGFR2/CD309 Rabbit Recombinant Antibody

Catalog Number: **CL750-98027-2**

## Basic Information

Catalog Number: CL750-98027-2	GenBank Accession Number: NM_010612.2	Purification Method: Protein A purification
Size: 100ug , 500 µg/ml	GeneID (NCBI): 16542	CloneNo.: 240214D7
Source: Rabbit	UNIPROT ID: P35918-1	Excitation/Emission maxima wavelengths: 755 nm / 780 nm
Isotype: IgG	Full Name: kinase insert domain protein receptor	
	Calculated MW: 150KD	

## Applications

Tested Applications:  
FC

Species Specificity:  
mouse

## Background Information

VEGFR2, also named as CD309, KDR and FLK1, is a receptor for VEGF or VEGFC. VEGFR2 which belongs to the protein kinase superfamily, has a tyrosine-protein kinase activity. The VEGF-kinase ligand/receptor signaling system plays a key role in vascular development and regulation of vascular permeability. In case of HIV-1 infection, the interaction with extracellular viral Tat protein seems to enhance angiogenesis in Kaposi's sarcoma lesions. VEGFR2 functions as the main mediator of VEGF-induced endothelial proliferation, survival, migration, tubular morphogenesis and sprouting. Mutations of this gene are implicated in infantile capillary hemangiomas.

## Storage

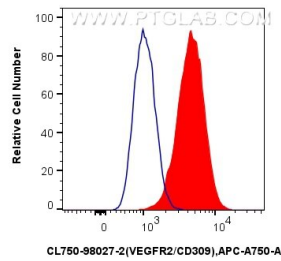
Storage:  
Store at 2-8°C. Avoid exposure to light.

Storage Buffer:  
PBS with 0.09% sodium azide.

For technical support and original validation data for this product please contact:  
T: 1 (888) 4PTGLAB (1-888-478-4522) (toll free in USA), or 1(312) 455-8498 (outside USA)  
E: [proteintech@ptglab.com](mailto:proteintech@ptglab.com)  
W: [ptglab.com](http://ptglab.com)

This product is exclusively available under Proteintech Group brand and is not available to purchase from any other manufacturer.

## Selected Validation Data



$1 \times 10^6$  bEnd.3 cells were surface stained with 0.25 ug CoraLite® Plus 750 Anti-Mouse VEGFR2/CD309 Rabbit Recombinant Antibody (CL750-98027-2, Clone: 240214D7) (red), or Isotype Control (blue). Cells were not fixed.