

For Research Use Only

# CoraLite® Plus 750 Anti-Rat IL-2 Rabbit Recombinant Antibody

Catalog Number: CL750-98046



## Basic Information

Catalog Number:

CL750-98046

Size:

100ug , 500 µg/ml

Source:

Rabbit

Isotype:

IgG

GenBank Accession Number:

NM\_053836

GeneID (NCBI):

116562

UNIPROT ID:

P17108

Full Name:

interleukin 2

Calculated MW:

18 kDa

Purification Method:

Protein A purification

CloneNo.:

240264C7

Excitation/Emission maxima wavelengths:

755 nm / 780 nm

## Applications

Tested Applications:

FC (Intra)

Species Specificity:

rat

## Background Information

Interleukin-2 (IL-2) is a four-helix bundle, type I cytokine that functions as a growth factor for a wide range of leukocytes. In the immune system, IL-2 is essential for immune homeostasis, normal T regulatory cell function, and self-tolerance. It regulates immune cell homeostasis and has been used to treat a range of disorders including cancer and autoimmune disease. IL-2 signals through heterodimerization of the IL-2R $\beta$  and IL-2R $\gamma$  receptor subunits (PMID: 25992858, 24907378, 15034008, 17981641).

## Storage

Storage:

Store at 2-8°C. Avoid exposure to light. Stable for one year after shipment.

Storage Buffer:

PBS with 0.09% sodium azide.

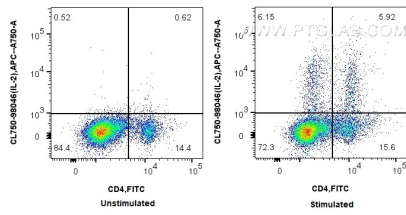
For technical support and original validation data for this product please contact:

T: 1 (888) 4PTGLAB (1-888-478-4522) (toll free in USA), or 1(312) 455-8498 (outside USA)

E: [proteintech@ptglab.com](mailto:proteintech@ptglab.com)  
W: [ptglab.com](http://ptglab.com)

This product is exclusively available under Proteintech Group brand and is not available to purchase from any other manufacturer.

## Selected Validation Data



1x10<sup>6</sup> untreated or PMA and ionomycin treated rat splenocytes were intracellularly stained with FITC Plus Anti-Rat CD4 and 0.25 ug CoraLite® Plus 750 Anti-Rat IL-2 Rabbit Recombinant Antibody (CL750-98046, Clone: 240264C7). Cells were fixed with 4% PFA and permeabilized with Flow Cytometry Perm Buffer (PF00011-C).