

For Research Use Only

# FcZero-rAb™ CoraLite® Plus 750 Anti-Mouse CD3e (145-2C11) Rabbit IgG Recombinant Antibody

Catalog Number: CL750-FcA65651



## Basic Information

Catalog Number:

CL750-FcA65651

Size:

100ug, 500 ug/ml

Source:

Rabbit

Isotype:

IgG

GenBank Accession Number:

BC098236

GeneID (NCBI):

12501

Full Name:

CD3 antigen, epsilon polypeptide

Purification Method:

Protein A purification

CloneNo.:

145-2C11

Recommended Dilutions:

FC: 0.25 ug per 10<sup>6</sup> cells in a 100 µl suspension

Excitation/Emission maxima wavelengths:

755 nm / 780 nm

## Applications

Tested Applications:

FC

Species Specificity:

human

Positive Controls:

FC : mouse splenocytes,

## Background Information

CD3 is a multimeric protein associated with the T-cell receptor (TCR) to form a complex involved in antigen recognition and signal transduction (PMID: 15885124). CD3 is composed of CD3γ, δ, ε, and ζ chains (PMID: 1826255). It is expressed by thymocytes in a developmentally regulated manner, T cells, and some NK cells (PMID: 3289580). The TCR recognizes antigens bound to major histocompatibility complex (MHC) molecules. TCR-mediated peptide-MHC recognition is transmitted to the CD3 complex, leading to the intracellular signal transduction (PMID: 11985657).

## Storage

Storage:

Store at 2-8°C. Avoid exposure to light. Stable for one year after shipment.

Storage Buffer:

PBS with 0.09% sodium azide, pH7.3

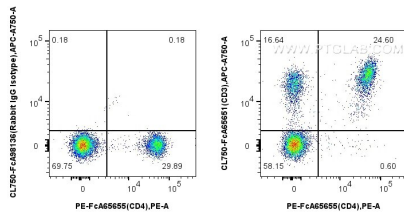
For technical support and original validation data for this product please contact:

T: 1 (888) 4PTGLAB (1-888-478-4522) (toll free in USA), or 1(312) 455-8498 (outside USA)

E: [proteintech@ptglab.com](mailto:proteintech@ptglab.com)  
W: [ptglab.com](http://ptglab.com)

This product is exclusively available under Proteintech Group brand and is not available to purchase from any other manufacturer.

## Selected Validation Data



1x10<sup>6</sup> mouse splenocytes were surface stained with FcZero-rAb™ PE Anti-Mouse CD4 (RM4-4), and 0.25 ug CoraLite® Plus 750 Anti-Mouse CD3e (145-2C11) Rabbit IgG RecAb (CL750-FcA65651, Clone: 145-2C11) or CoraLite® Plus 750 Rabbit IgG Isotype Control RecAb (CL750-FcA98136, Clone: 240953C9). Cells were not fixed.