

For Research Use Only

# CoraLux Violet 510 Anti-Human CD20 (2H7) Mouse IgG2a Recombinant Antibody

Catalog Number: **CLV510-65575**



## Basic Information

Catalog Number:

CLV510-65575

Size:

100 tests, 5 µl/test

Source:

Mouse

Isotype:

IgG2a

GenBank Accession Number:

BC002807

GeneID (NCBI):

931

UNIPROT ID:

P11836-1

Full Name:

membrane-spanning 4-domains, subfamily A, member 1

Calculated MW:

297 aa, 33 kDa

Purification Method:

Protein A purification

CloneNo.:

2H7

Recommended Dilutions:

FC: 5 µl per 10<sup>6</sup> cells in a 100 µl suspension

Excitation/Emission maxima wavelengths:

410 nm / 501 nm

## Applications

Tested Applications:

FC

Species Specificity:

human, monkey, non-human primates

Positive Controls:

FC : human PBMCs,

## Background Information

CD20 is a 33-37 kDa transmembrane phosphoprotein belonging to the membrane-spanning 4A family (PMID: 3260267; 16785532). CD20 is a B-lymphocyte surface molecule that is widely expressed during B-cell ontogeny, from early pre-B-cell developmental stages until final differentiation into plasma cells (PMID: 7524522). CD20 functions as calcium-permeable cation channel (PMID: 7684739). It is involved in the regulation of B-cell activation, proliferation and differentiation (PMID: 7524522).

## Storage

Storage:

Store at 2-8°C. Avoid exposure to light. Stable for one year after shipment.

Storage Buffer:

PBS with 0.09% sodium azide and 0.5% BSA, pH7.3

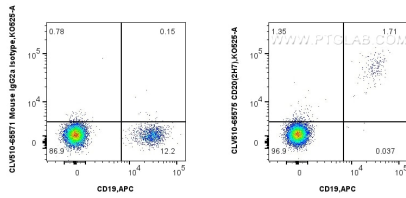
For technical support and original validation data for this product please contact:

T: 1 (888) 4PTGLAB (1-888-478-4522) (toll free in USA), or 1(312) 455-8498 (outside USA)

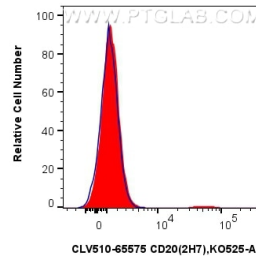
E: [proteintech@ptglab.com](mailto:proteintech@ptglab.com)  
W: [ptglab.com](http://ptglab.com)

This product is exclusively available under Proteintech Group brand and is not available to purchase from any other manufacturer.

## Selected Validation Data



1x10<sup>6</sup> human PBMCs were surface stained with FcZero-rAb™ APC Anti-Human CD19, and 5 ul CoraLux Violet 510 Anti-Human CD20 (2H7) Mouse IgG2a RecAb (CLV510-65575, Clone: 2H7) or CoraLux Violet 510 Mouse IgG2a Isotype Control (MOPC-173) Recombinant Antibody (CLV510-65571, Clone: MOPC-173). Cells were not fixed. Lymphocytes were gated.



1x10<sup>6</sup> human PBMCs were surface stained with 5 ul CoraLux Violet 510 Anti-Human CD20 (2H7) Mouse IgG2a RecAb (CLV510-65575, Clone: 2H7) (red) or CoraLux Violet 510 Mouse IgG2a Isotype Control (MOPC-173) Recombinant Antibody (CLV510-65571, Clone: MOPC-173) (blue). Cells were not fixed. Lymphocytes were gated.