

For Research Use Only

CoraLux Violet 510 Anti-Human CD68 (KP1) Mouse IgG2a Recombinant Antibody

Catalog Number: **CLV510-65593**



Basic Information

Catalog Number:

CLV510-65593

Size:

100tests , 5 ul/test

Source:

Mouse

Isotype:

IgG2a

GenBank Accession Number:

BC015557

GeneID (NCBI):

968

UNIPROT ID:

P34810

Full Name:

CD68 molecule

Calculated MW:

37 kDa

Purification Method:

Protein A purification

CloneNo.:

KP1

Recommended Dilutions:

FC (Intra): 5 ul per 10⁶ cells in a 100 μ l suspension

Excitation/Emission maxima wavelengths:

410 nm / 501 nm

Applications

Tested Applications:

FC (Intra)

Species Specificity:

human

Positive Controls:

FC (Intra) : human PBMCs,

Background Information

CD68 is a type I transmembrane glycoprotein that is highly expressed by human monocytes and tissue macrophages. It belongs to the lysosomal/endosomal-associated membrane glycoprotein (LAMP) family and primarily localizes to lysosomes and endosomes with a smaller fraction circulating to the cell surface. CD68 is also a member of the scavenger receptor family. It may play a role in phagocytic activities of tissue macrophages.

Storage

Storage:

Store at 2-8°C. Avoid exposure to light. Stable for one year after shipment.

Storage Buffer:

PBS with 0.09% sodium azide and 0.5% BSA, pH7.3

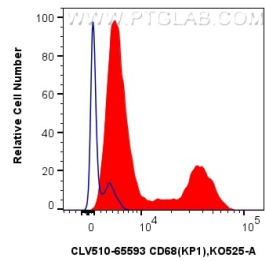
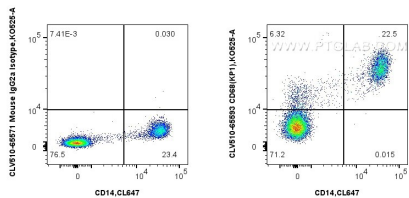
For technical support and original validation data for this product please contact:

T: 1 (888) 4PTGLAB (1-888-478-4522) (toll free in USA), or 1(312) 455-8498 (outside USA)

E: proteintech@ptglab.com
W: ptglab.com

This product is exclusively available under Proteintech Group brand and is not available to purchase from any other manufacturer.

Selected Validation Data



1x10⁶ human PBMCs were intracellularly stained with CoraLite® Plus 647 Anti-Human CD14, and 5 ul CoraLux Violet 510 Anti-Human CD68 (KP1) Mouse IgG2a RecAb (CLV510-65593, Clone:KP1), or CoraLux Violet 510 Mouse IgG2a Isotype Control (MOPC-173) Recombinant Antibody (CLV510-65571, Clone: MOPC-173). Cells were incubated with FC Receptor Block prior to staining. Cells were fixed and permeabilized with Intracellular Flow

1x10⁶ human PBMCs were intracellularly stained with 5 ul CoraLux Violet 510 Anti-Human CD68 (KP1) Mouse IgG2a RecAb (CLV510-65593, Clone:KP1) (red), or CoraLux Violet 510 Mouse IgG2a Isotype Control (MOPC-173) Recombinant Antibody (CLV510-65571, Clone: MOPC-173) (blue). Cells were incubated with FC Receptor Block prior to staining. Cells were fixed and permeabilized with Intracellular Flow Cytometry Fixation & Permeabilization Buffer Kit (PF00019).