

For Research Use Only

CoraLux Violet 510 Anti-Human NCAM1/CD56 Rabbit Recombinant Antibody

Catalog Number: **CLV510-98033**



Basic Information

Catalog Number:

CLV510-98033

Size:

100 tests, 5 µl/test

Source:

Rabbit

Isotype:

IgG

Immunogen Catalog Number:

EG31816

GenBank Accession Number:

BC047244

GeneID (NCBI):

4684

ENSEMBL Gene ID:

ENSG00000149294

UNIPROT ID:

P13591

Full Name:

neural cell adhesion molecule 1

Calculated MW:

95 kDa

Purification Method:

Protein A purification

CloneNo.:

240078A7

Recommended Dilutions:

FC: 5 µl per 10⁶ cells in a 100 µl suspension

Excitation/Emission maxima wavelengths:

410 nm / 501 nm

Applications

Tested Applications:

FC

Species Specificity:

human

Positive Controls:

FC : human PBMCs,

Background Information

Neural cell adhesion molecule 1 (NCAM1, also known as CD56) is a cell adhesion glycoprotein of the immunoglobulin (Ig) superfamily. It is a multifunction protein involved in synaptic plasticity, neurodevelopment, and neurogenesis. NCAM1 is expressed on human neurons, glial cells, skeletal muscle cells, NK cells and a subset of T cells, and the expression is observed in a wide variety of human tumors, including myeloma, myeloid leukemia, neuroendocrine tumors, Wilms' tumor, neuroblastoma, and NK/T cell lymphomas.

Storage

Storage:

Store at 2-8°C. Avoid exposure to light. Stable for one year after shipment.

Storage Buffer:

PBS with 0.09% sodium azide and 0.5% BSA, pH7.3

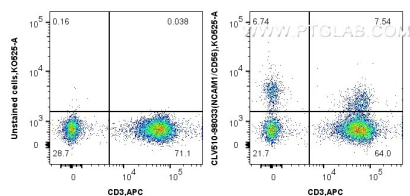
For technical support and original validation data for this product please contact:

T: 1 (888) 4PTGLAB (1-888-478-4522) (toll free in USA), or 1(312) 455-8498 (outside USA)

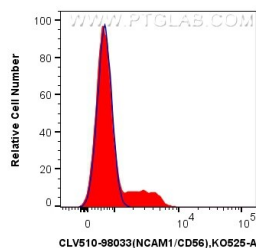
E: proteintech@ptglab.com
W: ptglab.com

This product is exclusively available under Proteintech Group brand and is not available to purchase from any other manufacturer.

Selected Validation Data



1x10⁶ human PBMCs were surface stained with APC Anti-Human CD3, and 5 ul CoraLux Violet 510 Anti-Human NCAM1/CD56 Rabbit RecAb (CLV510-98033, Clone: 240078A7) or unstained. Cells were incubated with FC Receptor Block prior to staining. Cells were not fixed.



1x10⁶ human PBMCs were surface stained with 5 ul CoraLux Violet 510 Anti-Human NCAM1/CD56 Rabbit RecAb (CLV510-98033, Clone: 240078A7) (red), or unstained (blue). Cells were incubated with FC Receptor Block prior to staining. Cells were not fixed.