

For Research Use Only

CoraLux Violet 510 Anti-Human CD45 Rabbit Recombinant Antibody

Catalog Number: CLV510-98117



Basic Information

Catalog Number:

CLV510-98117

Size:

100 tests, 5 µl/test

Source:

Rabbit

Isotype:

IgG

Immunogen Catalog Number:

EG2486

GenBank Accession Number:

GeneID (NCBI):

5788

ENSEMBL Gene ID:

ENSG00000081237

Full Name:

protein tyrosine phosphatase, receptor type, C

Calculated MW:

147 kDa

Purification Method:

Protein A purification

CloneNo.:

241670E10

Recommended Dilutions:

FC: 5 µl per 10⁶ cells in a 100 µl suspension

Excitation/Emission maximum wavelengths:

410 nm / 501 nm

Applications

Tested Applications:

FC

Species Specificity:

human

Positive Controls:

FC : human peripheral blood leukocytes,

Background Information

CD45, also known as protein tyrosine phosphatase, receptor type C, is a type I transmembrane protein expressed on the surface of all haematopoietic cells with the exception of erythrocytes and platelets (PMID: 3489673; 28615666). CD45 is a pan-haematopoietic cell marker and has been shown to be essential for T- and B-cell activation and signalling (PMID: 9429890; 16378097).

Storage

Storage:

Store at 2-8°C. Avoid exposure to light. Stable for one year after shipment.

Storage Buffer:

PBS with 0.09% sodium azide and 0.5% BSA, pH7.3

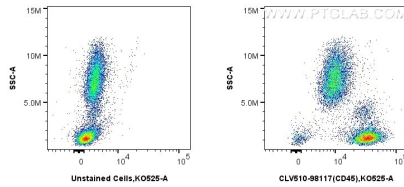
For technical support and original validation data for this product please contact:

T: 1 (888) 4PTGLAB (1-888-478-4522) (toll free in USA), or 1(312) 455-8498 (outside USA)

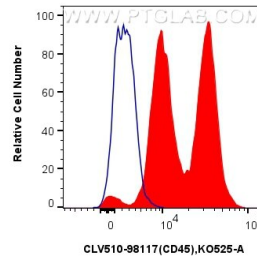
E: proteintech@ptglab.com
W: ptglab.com

This product is exclusively available under Proteintech Group brand and is not available to purchase from any other manufacturer.

Selected Validation Data



1×10^6 human peripheral blood leukocytes were surface stained with 5 μ l CoraLux Violet 510 Anti-Human CD45 Rabbit RecAb (CLV510-98117, Clone: 241670E10) or unstained. Cells were incubated with FC Receptor Block prior to staining. Cells were not fixed.



1×10^6 human peripheral blood leukocytes were surface stained with 5 μ l CoraLux Violet 510 Anti-Human CD45 Rabbit RecAb (CLV510-98117, Clone: 241670E10) (red) or unstained (blue). Cells were incubated with FC Receptor Block prior to staining. Cells were not fixed.